

ON THE PATHS OF PELION

REFORMATION AND RESTORATION OF THE MILIES
RAILWAY STATION AREA

Diploma Project

Ntua School of Architecture

Student_Kolovou Paraskevi

Professor_Katsaros Miltiadis



- Galaxy Road
- River
- Road
- Settlements / Villages

Regeneration of Milies Train Station

📍 Milies, Magnesia, GR



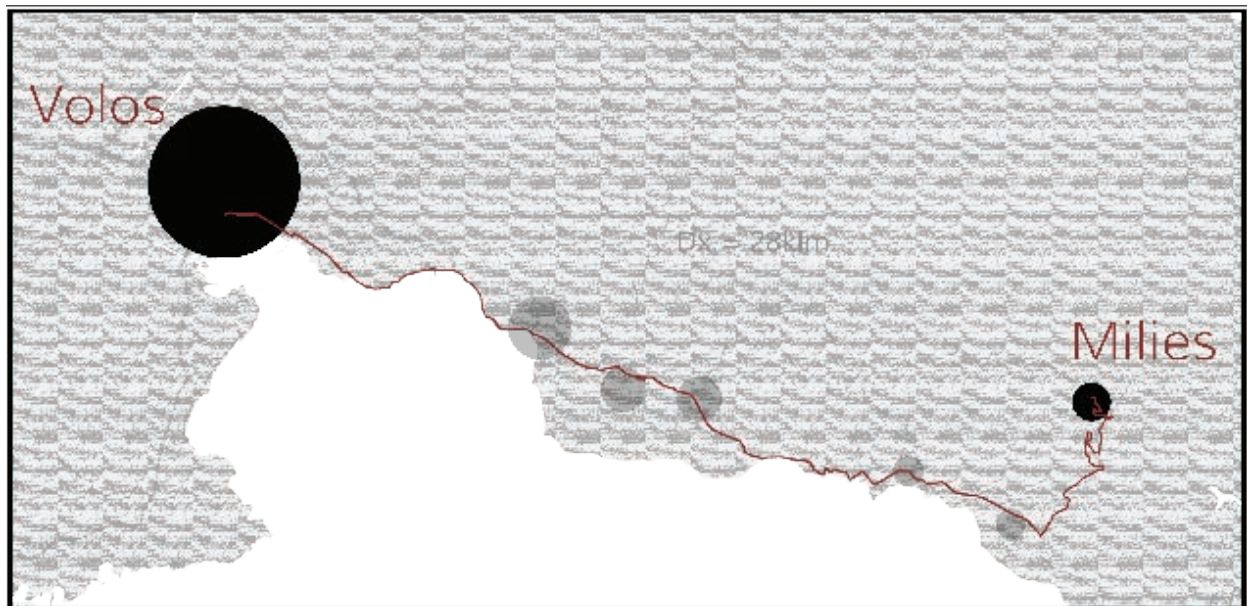
NTUA [University Project, Thesis]



10/2017

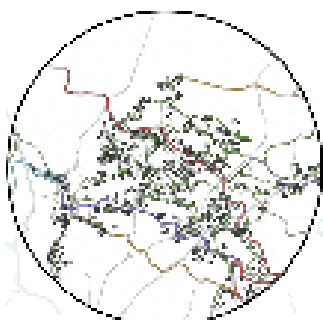
Milies is one of the main traditional villages in mountain Pilion, in Central Greece. The traditional train "Moutzouris" was built in 1900 and provides the people of Milies and the settlements around with many goods from the main land and an easy connection to the town of Volos.

In 1970 the operation of the train is stopped and the Train Station started to be abandoned and in the same way the local watermill stops functioning. After 26 years, in 1996, Moutzouris started travelling again and climbing up the mountain of Pilion as a tourist attraction, still the station is in an improper condition and the locals and visitors are facing many difficulties when they are arriving.



Milies is located on an altitude of 300 - 450 meters and there are approximately 900 permanent people living in the village. The flora is very intense in the area and a lot of small rivers and torrents run through the mountain.

Tourists from all over the world come to Pilion they do not hesitate to discover its beauty through hiking wintersports, riding, motorsport, water sports, agrotourism, mountain biking, gastrotourism or climbing.

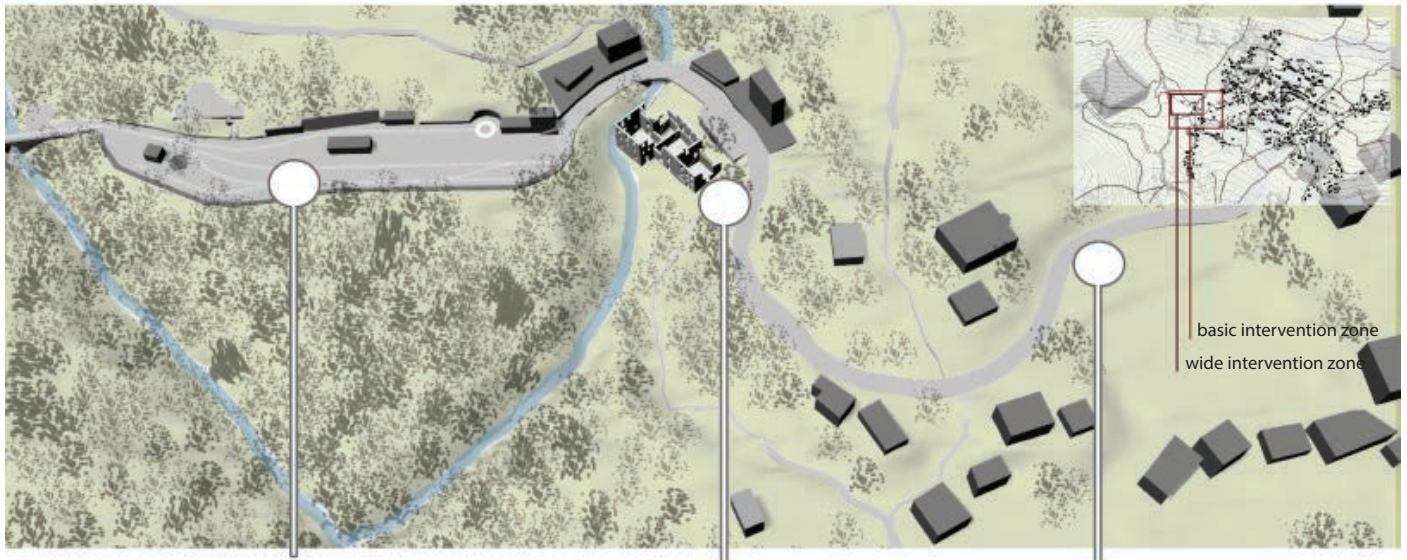


- main road
- local roads
- dirt roads
- paths



- central walking path to the village
- open urban spaces
- parking areas

Intervention area | current situation | problems



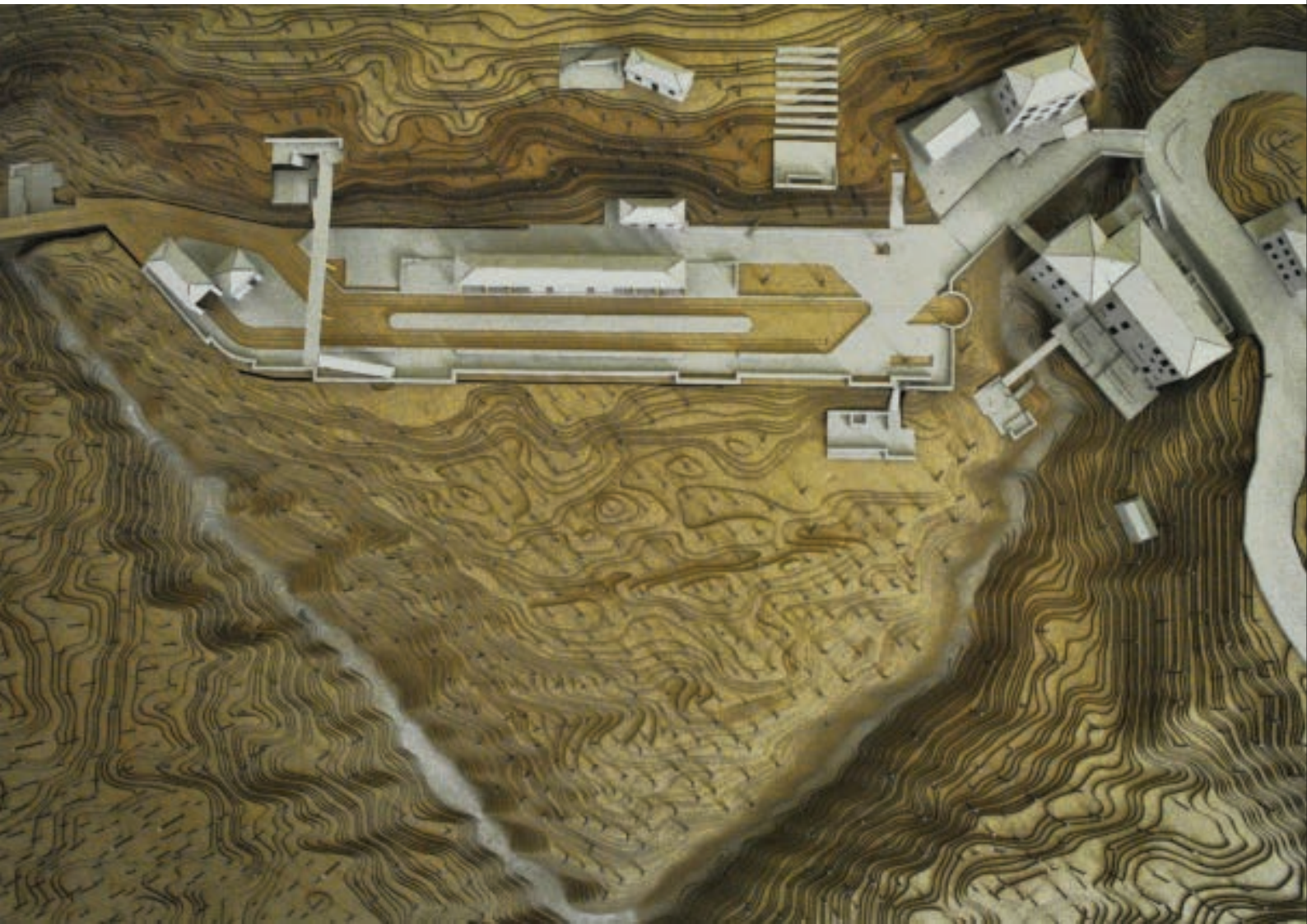
abandoning the railway station
non-observance of international regulations for Railway Stations
use of the railway station as a parking space

abandonment and dissolution
of the old watermill

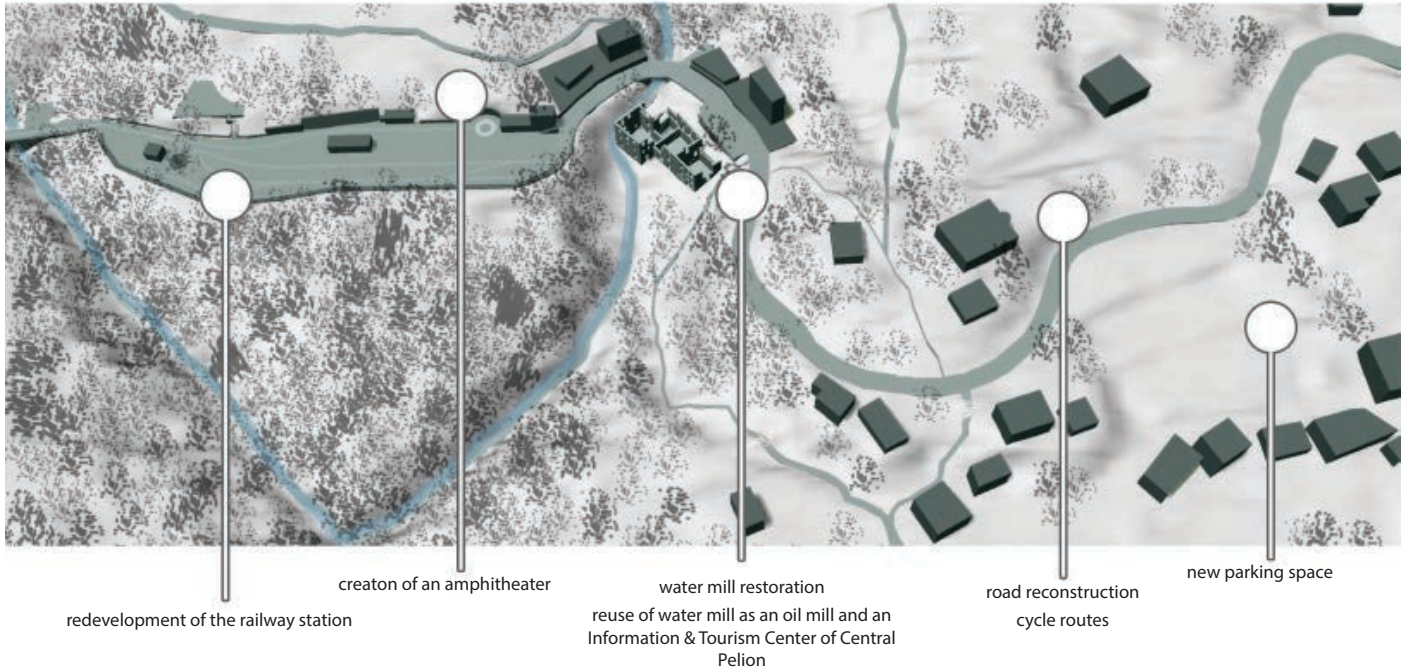
narrow passage for use of the two-way road
use of the road as a parking space

Therefore the need of an analytical research of the station's area was immediate. A serious issue was to design an appropriate road connection to the main road. In addition the big challenge was to keep the regenerate of train station and the watermill preserving their traditional character and nature around.

The watermill except of its previous use for producing olive oil, it will be working as Tourist and Information Center of mountain Pilon.

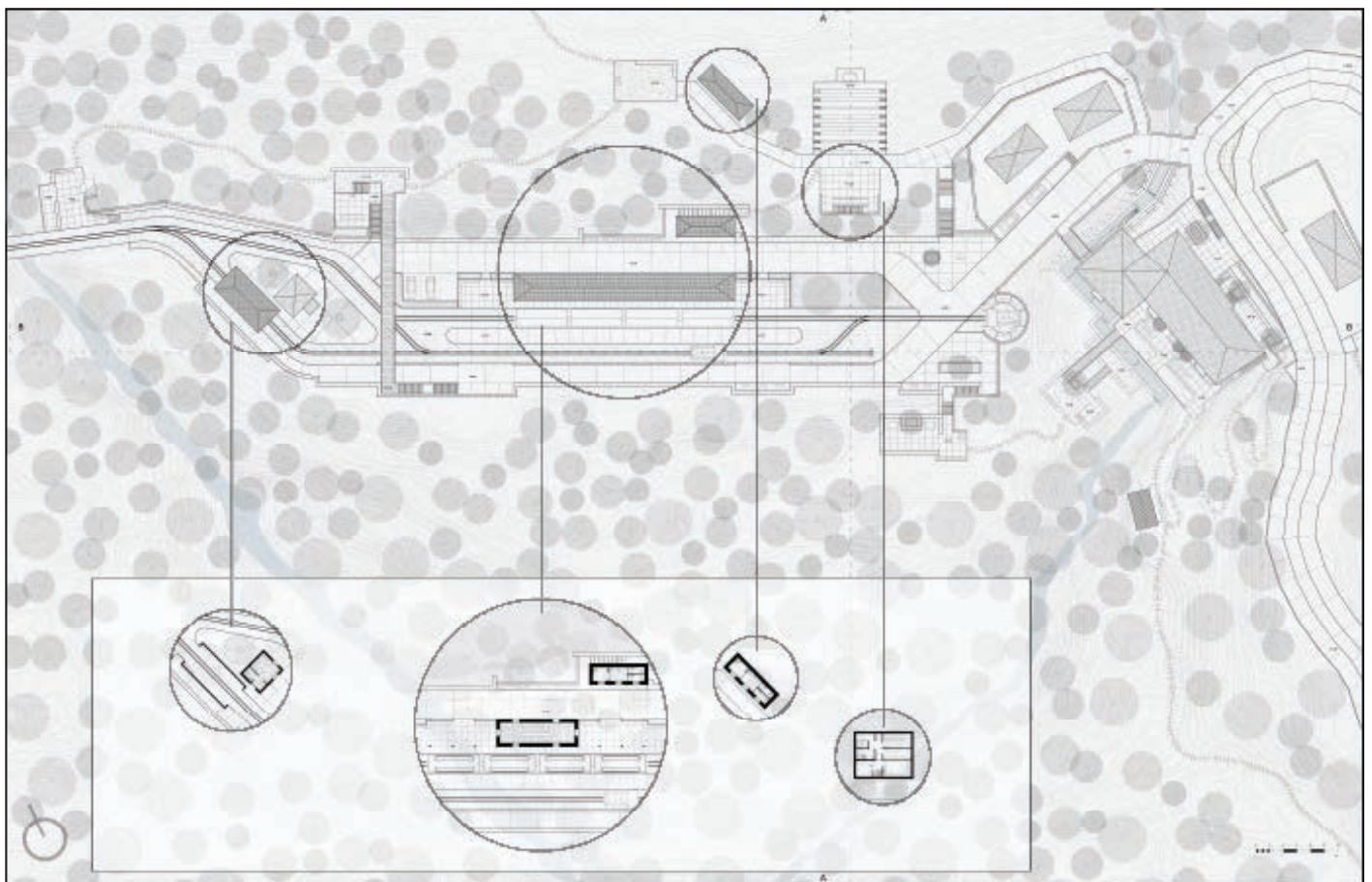


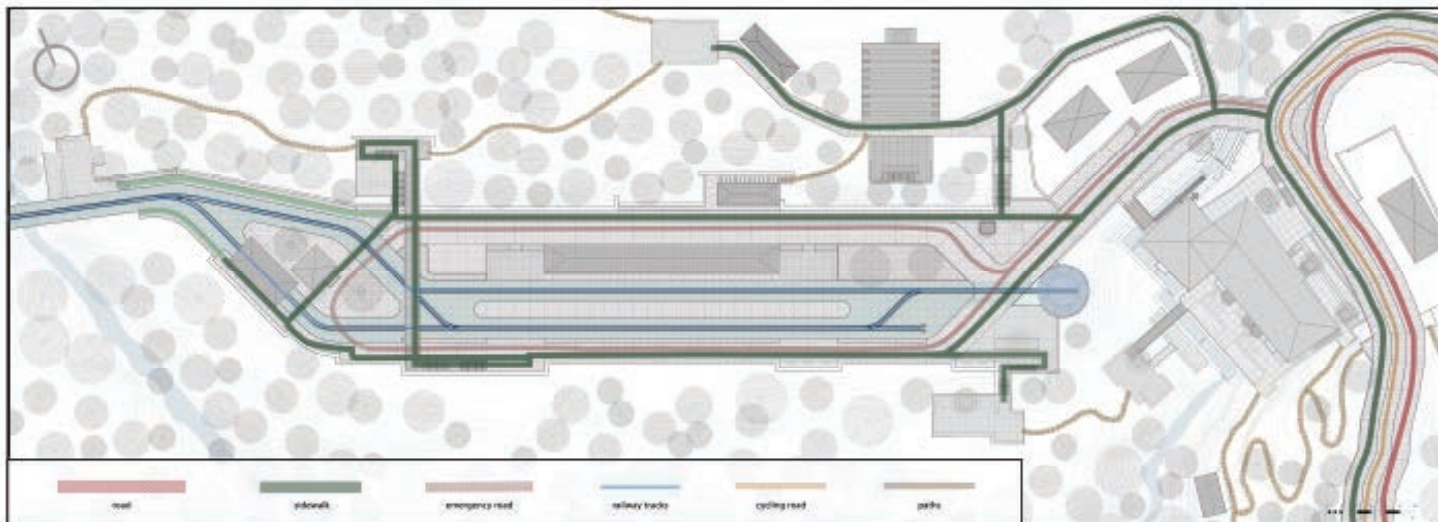
Intervention area | current situation | solutions



In a distance of 250 meters a new parking is created for the visitors and the locals and the road is reconstructed so that its wider and combined with a bicycle line. A part of new road is constructed in order cars and buses to have an easier access and turn.

Under the project the buildings for the proper use of the station are built in positions so that open straight movements are created for the train and the pedestrians and a bridge is being created where someone can have an overlook of the station, see the arrival of the train from an upper view and feel the nature from an other level.



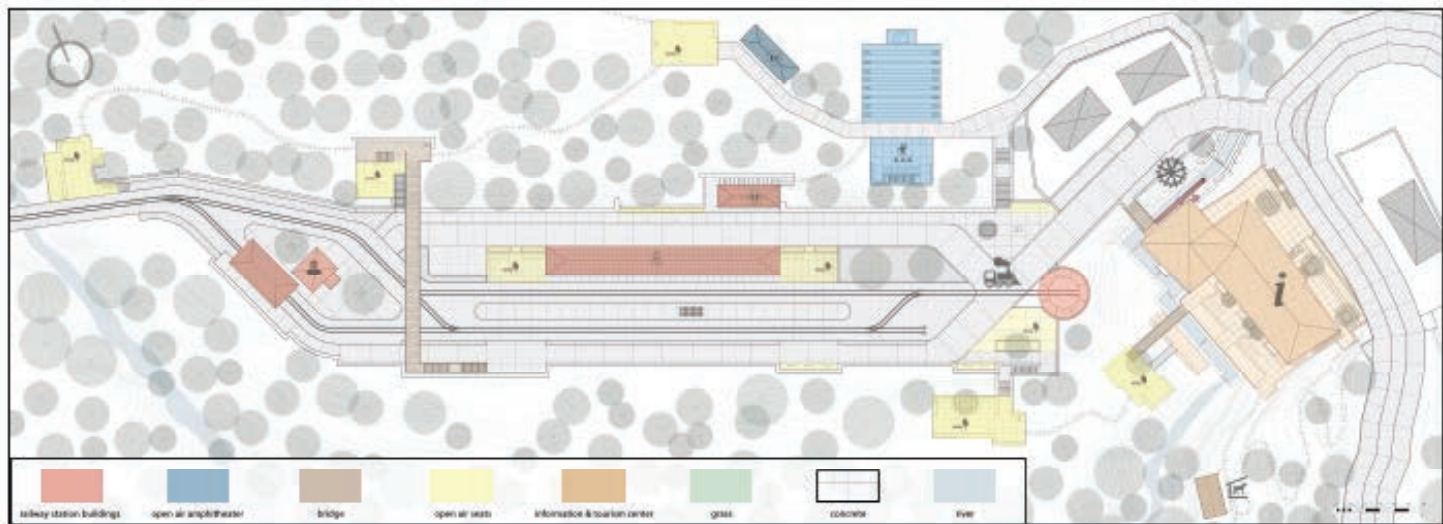


At end of the railway line there is a platform where the train engine can be revolved in order to be ready for the return journey.

Moreover several spots are constructed around the station inside the trees and are connected with paths or stairs. People can relax there and have some moments to feel the forest.

An open air theater is created on the hill for local events and festivals, following the natural slope.





The pathology of watermill was analyzed through the project. The current situation of the building shows collapse. The roof, the floors, the windows and the water wheel are totally destroyed and there are also other problems. According to these failures, past photos and the traditional style of the local architecture the mill is going to be restored.

However in the inside new levels, partitions and walls are designed.

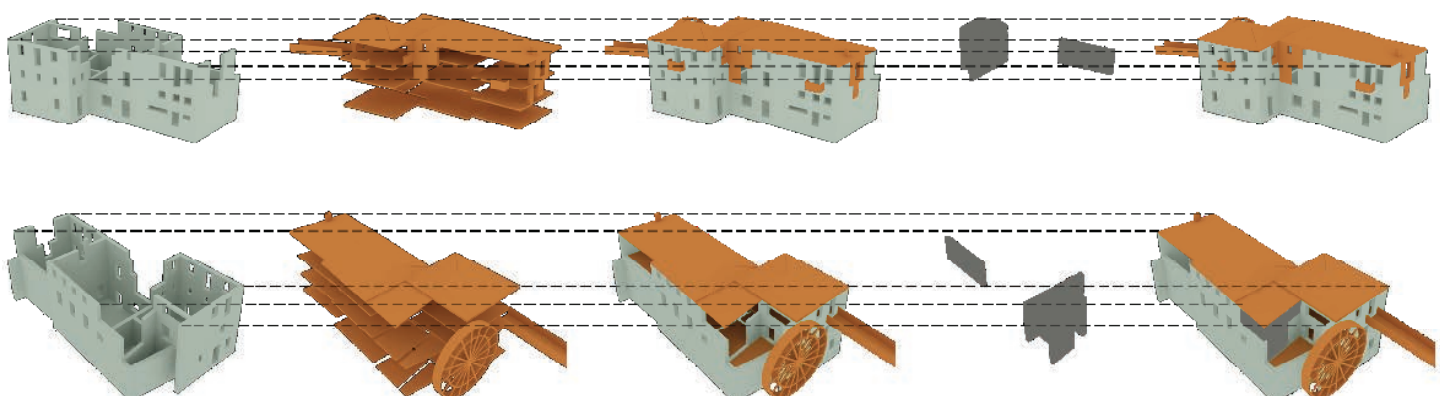
The watermill is now the new Tourist and Information Center of mountain Pilon. People when coming with the train they can learn about the mountain, it's villages and the activities that they do there.



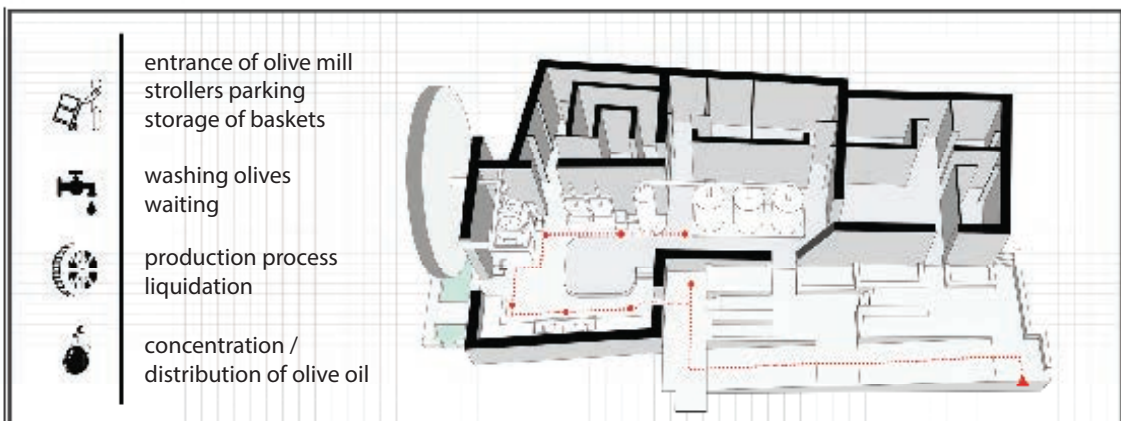
GENERAL DAMAGES	total roof destruction
	total floor destruction
	mortar erosion
	destruction of the frames
	destruction of the water wheel
LOCAL DAMAGES	plant penetration into the masonry
	foundation problems
	wall curvature
	deformations
	cracks



In the new Tourist and Information Center of mountain Pilon there is an exhibition about Pilon in general, a shop where you can buy local products, an olive mill, an olive tasting room. There is also a space for visitors to be informed about the activities they can do and they can buy or rent equipments for these activities.

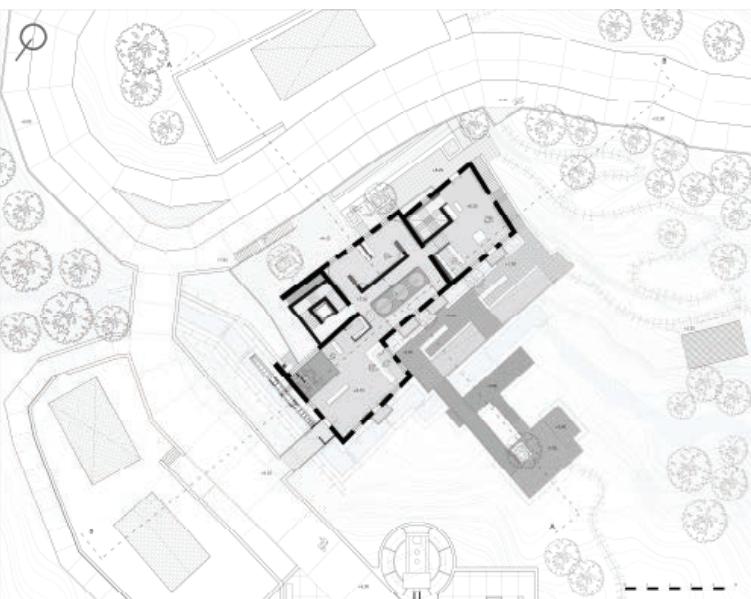


building program and movements



There are three levels in the building and there separate entrances in each level. "Holes" on the floors can provide the visitor to have an overall view of the interior and the light is spread everywhere inside. Ramps and elevators are designed over the levels, so that people with disabilities can move around easily.

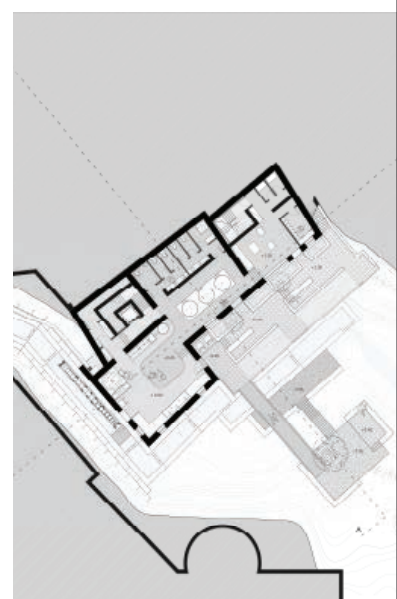
In the outside different verantas, spaces and gardens are made both in the east and the west side of the mill in order people to experience the nature of the trees and the river. The flow of the river is led through multiple tanks in case of a flood to avoid an overflow. A stable and a parking room for bicycles there are designed on condition people wanted to have a ride with a horse or a bike.



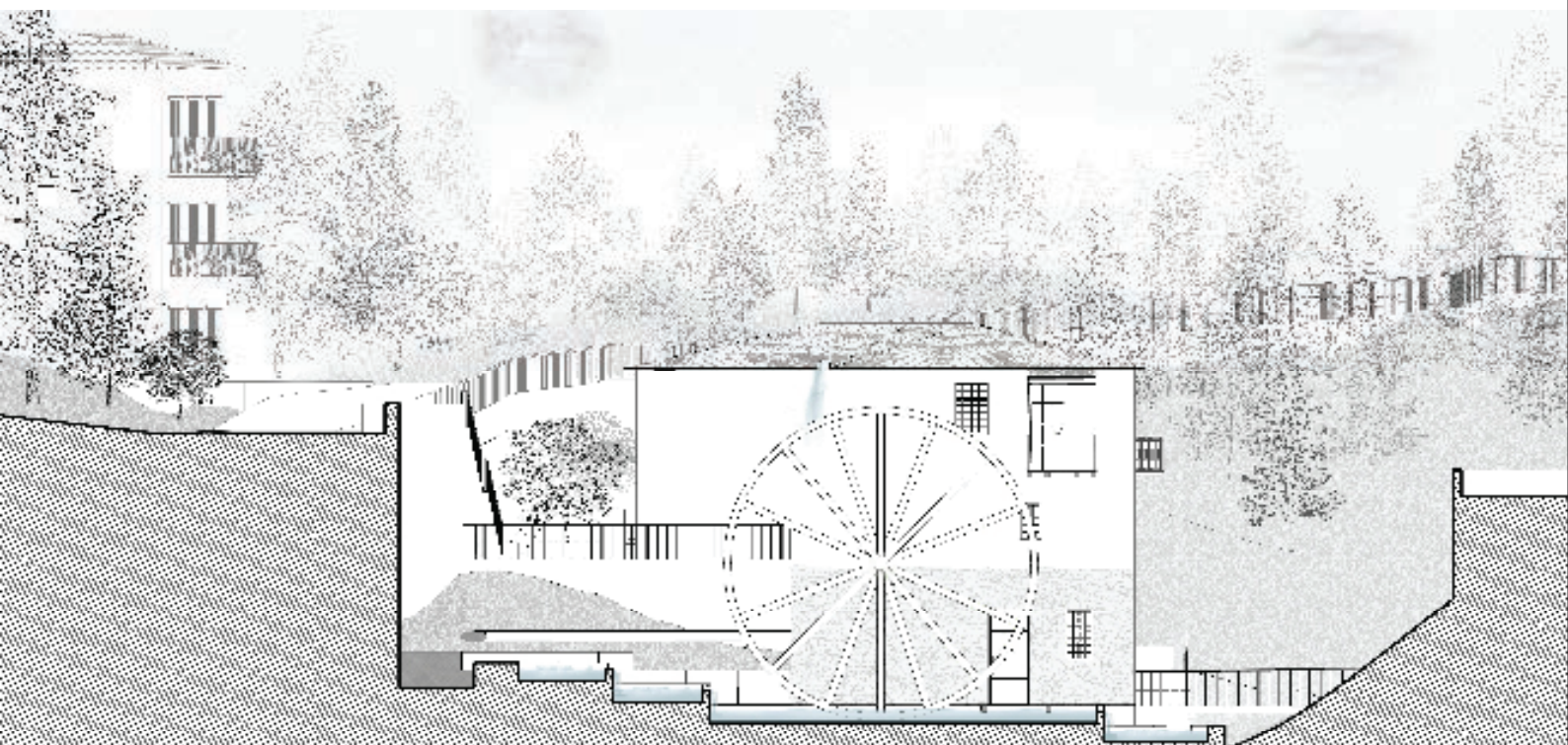
level 2



level 1



level 0



north view



