

Photographic Record

Former 12th Primary School

Vas.Georgiou 27 & Mpizaniou St.

Taken by:

M.Xofi - 2011



Description:

Ph.1- East elevation along Mpizaniou Street from S/E corner.



Description:

Ph.2 – S/W corner view showing the entrance to the basement below the main staircase entrance to the upper ground level.



Description: Ph.3 – Main south view along Vasileos Georgiou Street.



Description: Ph.4 – Detail of Photo 3 showing the disintegration of plaster along the parapet due to weathering conditions.



Description:

Ph.5 – Detail of Photo 4 showing fine vertical cracking and dampness along the wall height.



Description:

Ph.6- Main front entrance from south elevation of Vas. Georgiou St. The four cantilever supports of the balcony are shown together with the three marble slabs.



Description: Ph.7- Better detail of Ph.6



Description: Ph.7a- Detail of ph.7, showing the vertical crack below the balcony.



Description:

Ph.8 – NW corner with the added part of the courtyard staircase to the upper ground level.



Description:

Ph.9- Opposite side at SW corner.



Description: Ph.10a- North part of west elevation.

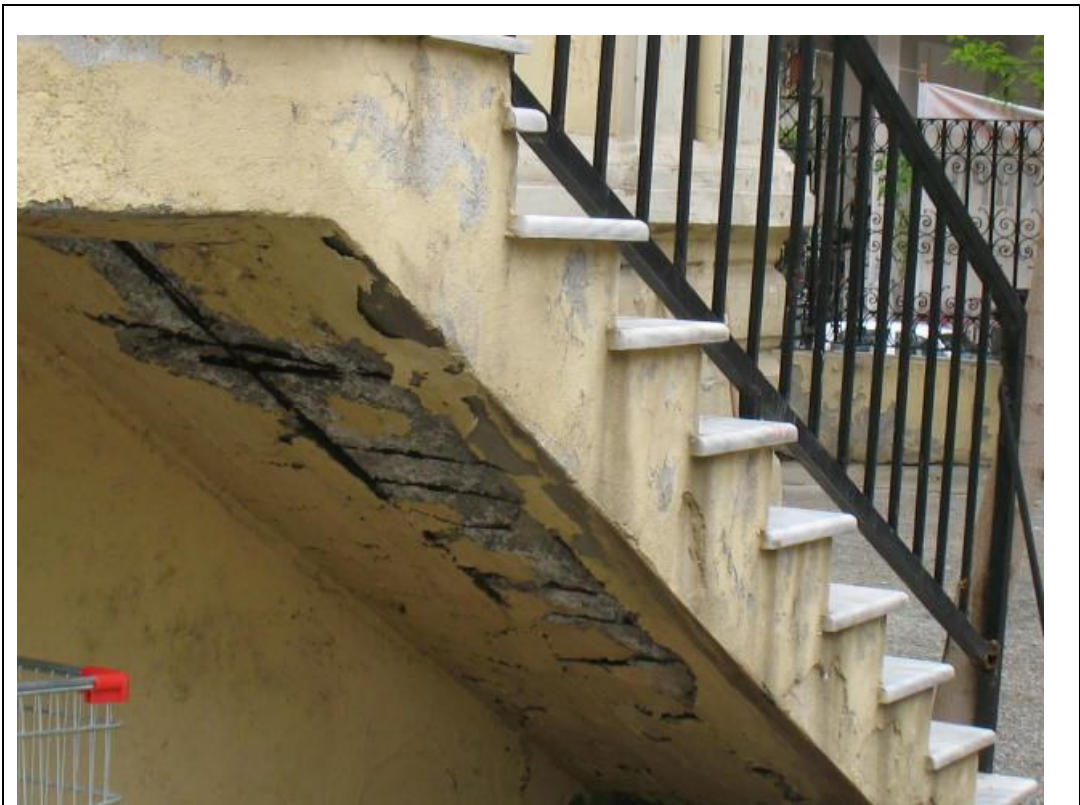


Description: Ph.10b- South part of west elevation.



Description:

Ph.11- Detail of ph.10a showing the disintegration of plaster due to weathering.



Description:

Ph.11a- Detail of ph.10b showing the disintegration of plaster due to weathering and the reveal of reinforcement of the concrete staircase.



Description:

Ph.12- View of the terrace at the rear north side of the building with the recent metal staircase for access to the upper floor.



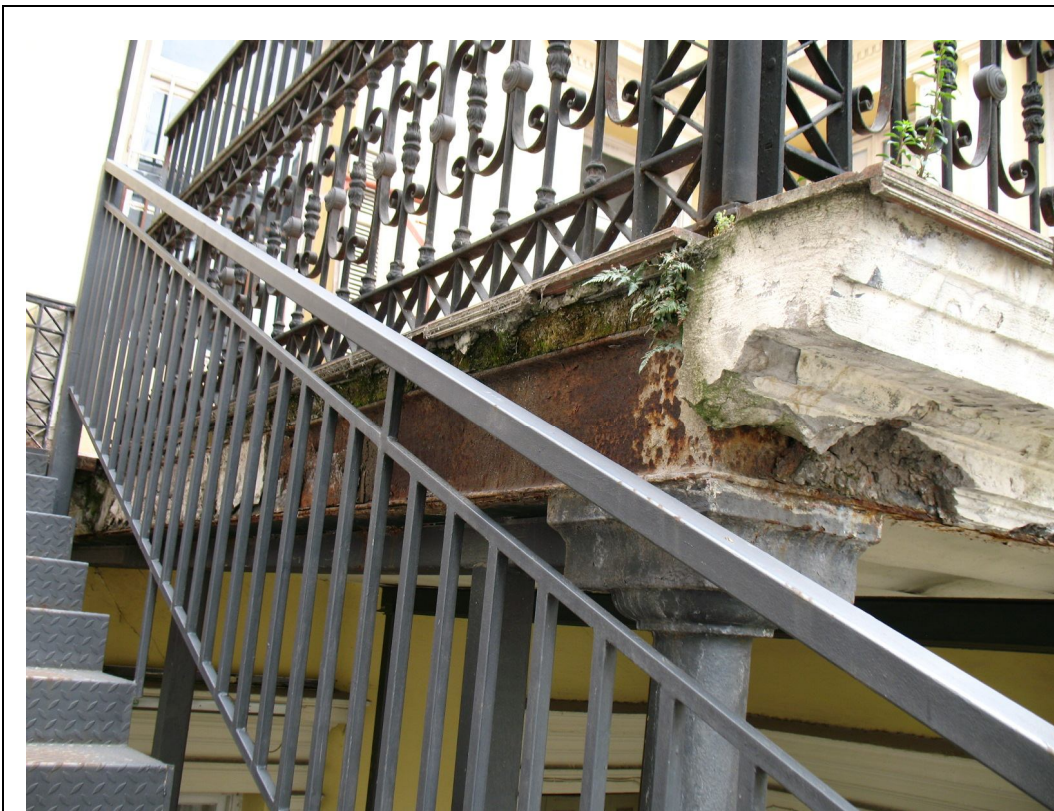
Description:

Ph.13- Detail of ph.12 showing the secondary original staircase from the rear north side. The widening of the stairs at a later stage becomes apparent.



Description:

Ph.14- Detail of the support of the terrace with the original corroded edge steel beams I200 being supported on the Ø120 CHS post together with the recent SHS steel members supporting the existing frame.



Description:

Ph.15- Detail of the terrace and the corrosion of the existing edge steel beams from the steel staircase.



Description:

Ph.16- View of the terrace from underneath showing the arched floor between steel beams.



Description:

Ph.17- Intermediate support of the terrace at its mid span.



Description:

Ph.18— North view at upper – 1st floor from the terrace (outside of room O1).



Description:

Ph.19- Base support of original circular post Ø120 of the terrace next to the recent SHS post of the steel staircase.



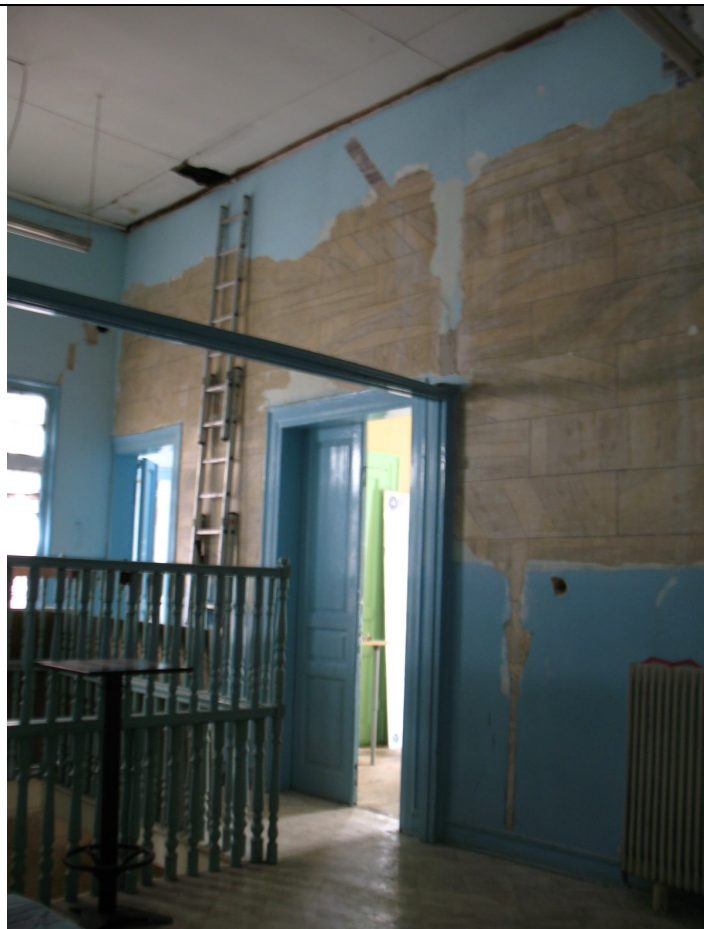
Description: **Ph.20-** Inside view of photo 18 – room O1 at 1st floor level with the floor opening of the staircase.



Description: **Ph.21-** Section of the timber staircase coming from the ground floor level.



Description: Ph.22- Opposite view (from ph.20) at room O1 from the corridor O11 showing the door entrances at rooms O1 α and O6 (left).



Description: Ph.23. View of room O1 showing the entrance doors at rooms O7 and O8 and the corner of the floor opening of the staircase coming from ground floor.



Description: Ph.23a- Front view of the wall of ph.23 (room O1) with cracks above openings.



Description: Ph.23b- The right hand side of the wall from ph.23a showing the door entrance at room O6 and the cracks above door opening.



Description:

Ph.24- View of room O3-O4 at N-W corner showing the built in chimney at the perimeter walls and the recent intervention on the side walls with the steel goal post arrangement.



Description:

Ph.25- View of the SW corner of the joined rooms O3-O4 showing the steel goal post arrangement below the original pair of steel beams which were placed after the wall demolition.



Description: Ph.25a- Detail of ph.24.



Description: Ph.25b- Opposite detail of the frame on the wall between rooms O3-O4 and O1.



Description:

Ph.26 – View of the door exit to the balcony at south elevation from room O1α showing the crack above the opening and the reveal of the original wall decoration/ mosaic.



Description:

Ph.27 – Section above the window at room O7 showing the two layers of hole bricks creating an arch shape lintel.



Description: Ph.28- Secondary timber staircase going to the terrace at roof level.



Description: Ph.29- View of the staircase (ph.28) at 1st floor level going down to ground floor.



Description:

Ph.30– View of the wall section above the door of room O10 with oblique or vertical fine cracks.



Description:

Ph.31– Disintegration of plaster due to weathering both at ceiling and walls.



Description:

Ph.32- Overall view of the main communal room 11 from south to north showing the main timber staircase at ground level going up at 1st floor.



Description:

Ph.33- Overall view of the main central communal room 11 at ground floor taken from north to south side.



Description:

Ph.34– View of the today’s joined rooms I3-I4 at ground. The exit door leads to the west side staircase of the courtyard.



Description:

Ph.35– Opposite side with the boxed out section of previous interventions (as shown on room above at O3-O4).



Description:

Ph.36– Steel goal post arrangement at the joined room I6-17 at ground.



Description:

Ph.37- Opposite side of the same room I6-17 at ground floor.



Description:

Ph.38– View of the secondary staircase at ground floor level. The previous opening of the floor for access to the basement is closed by plywood sheets.



Description:

Ph.39– Detail of the floor closure next to the original floor boarding.

Photographic Record

Former 12th Primary School

Vas.Georgiou 27 & Mpizaniou St.

Taken by:

Stylianidi & Ignataki - 2004



Description:

Ph.40- Panoramic view of the NW corner of the building and the roof plan.



Description:

Ph.41- Top view of the terrace above room O10 with the secondary timber staircase access from 1st floor.



Description: Ph.42– Panoramic view of the hipped roof and terrace of the building.



Description: Ph.43– Parapet inside view with the enclosed roof along the east elevation of the building. At the right hand side is shown the window of the staircase leading to the roof terrace.



Description:

Ph.44- Parapet side view at the NW corner of the building.



Description:

Ph.45- Top view of the secondary timber staircase from terrace roof level towards first floor at room O8.



Description: **Ph.46**– Part view of the main diagonal timber roof truss and the secondary trusses for the support of roof elements.



Description: **Ph.47**– Another side view of similar elements, as per ph.46.



Description: Ph.48- NE view of the roof area inside showing the south wall of the staircase that leads to the roof terrace.



Description: Ph.49- View of the east area of the roof showing the secondary truss for the support of sloped roof elements.



Description:

Ph.50 – External view of the NE corner of room O10. The oblique crack of the fireplace area is obvious.



Description:

Ph.51 – View of the room O10 is showing the oblique cracks due to the later stage infill section of the old kitchen fireplace with the steel beam I140 acting as a lintel at the top.



Description:

Ph.52- Detail of ph.51 showing the discontinuous built of the fireplace infill by bricks.



Description:

Ph.53- Detail of ph.52 showing the metal L shaped plates supporting the cantilevered decorative corner feature (see ph.50).



| | |
|---------------------|--|
| Description: | Ph.54- Exposed floor section between rooms O5 – O6 showing the transverse timber beams being supported directly to the ground floor wall. |
|---------------------|--|



| | |
|---------------------|---|
| Description: | Ph.55- Timber floor section at room O7 with the transverse timber beams being supported on the wall between rooms O7 – O8. |
|---------------------|---|



Description:

Ph.56- Opening section of the timber floor at 1st floor between rooms O3 – O4. It is shown the transverse timber beams which are supported on the longitudinal timber beam that is supported itself by a pair of steel beams (21140).



Description: Ph.57- View of the joined rooms O3 – O4 with the pair of steel beams at ceiling level to support the roof after the wall demolition.



Description: Ph.58- Detail of the ph.57.



Description: Ph.59- View of the room O2 at 1st floor showing the partial demolition of the wall between rooms O1α – O2.



Description: Ph.60- Opened floor section at the bottom of the pier between rooms O1α – O2. It is shown the timber beams supported on the wall below between rooms I1-I2.



Description: Ph.61- Location of the ground ceiling at room I1 (under the 1st floor wall between rooms O1 – O1α).

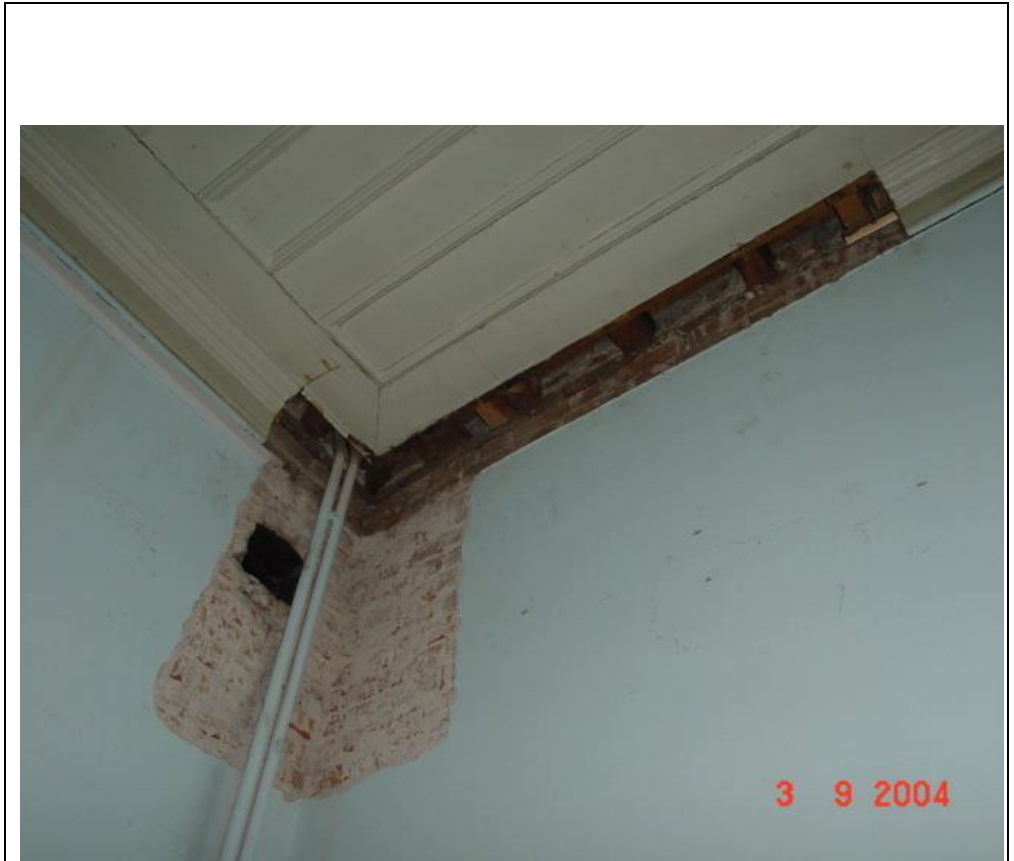


Description: Ph.61a- Detail of Ph.61 revealing the pair of steel beams that carries the wall above with the concrete infill between.



Description:

Ph.62- View of the room 14 at NW corner revealing the timber beams at floor and ceiling level.



Description:

Ph.62a- Detail of the ceiling from photo 62 showing a timber tie beam at the wall head supporting the transverse timber 1st floor beams. A hole of the built in chimney is shown at the NW corner of perimeter walls.



Description:

Ph.63- View of the room I4 at NW corner revealing the timber beams at floor (ph.62).



Description:

Ph.63a- Detail of Ph.63. showing the timber ground floor beams at room I4 to be supported directly at the head of the basement wall without a tie beam.



Description:

Ph.64- Section cut at ground ceiling level above the west door exit room 13 showing no sign of the marbled cantilever supports of the balconies reaching the inner leaf of masonry.



Description:

Ph.65- East side of joined room 16-17 with the pair of steel beams supporting the timber floor above.



Description: Ph.66- Detail of Ph.65 showing the surface corrosion of the double steel beams I140 that support the timber beam above which then act as a line of support for the timber floor beams at room O6-O7.



Description: Ph.67- Better detail of photo 66.



| | |
|---------------------|---|
| Description: | Ph.68- Section cut of the timber floor at SE corner of room 12 showing timber beams supported directly to the basement wall below. |
|---------------------|---|



| | |
|---------------------|--|
| Description: | Ph.69- Section cut of the timber ground floor between rooms 16 –17. The timber beams are supported directly to the basement wall below. |
|---------------------|--|



| | |
|---------------------|--|
| Description: | Ph.70 – General view of Y1 at basement. |
|---------------------|--|



| | |
|---------------------|---|
| Description: | Ph.71 - Section cut at the ceiling of room Y1 above the door entrance to room Y6. The timber ground floor beams are supported on a tie beam at the basement wall head. |
|---------------------|---|



Description: Ph.72- View of the room Y2 showing the arched window openings.



Description: Ph.72a – Excavation at room Y2 to determine the foundation cut off level along the perimeter walls.



Description:

Ph.73– Ceiling of room Y8 showing the closure of the original opening of the staircase to the basement.



| | |
|---------------------|---|
| Description: | Ph.74 – North side view of room Y10 at basement showing the rubble stone masonry and the arched floor between steel beams. |
|---------------------|---|



| | |
|---------------------|---|
| Description: | Ph.75 – East side view of window at room Y10 on basement. The timber lintel is shown above the window opening. |
|---------------------|---|