

The project is co-funded by the European Social Fund (75%) and National Resources (25%) – (ΕΡΕΑΕΚ ΙΙ)



ΥΠΟΥΡΓΕΙΟ ΕΘΝΙΚΗΣ ΠΑΙΔΕΙΑΣ ΚΑΙ ΘΡΗΣΚΕΥΜΑΤΩΝ  
ΕΙΔΙΚΗ ΥΠΗΡΕΣΙΑ ΔΙΑΧΕΙΡΙΣΗΣ ΕΠΕΑΕΚ  
ΕΥΡΩΠΑΪΚΗ ΕΝΩΣΗ  
ΣΥΓΧΡΗΜΑΤΟΔΟΤΗΣΗ  
ΕΥΡΩΠΑΪΚΟ ΚΟΙΝΩΝΙΚΟ ΤΑΜΕΙΟ  
ΕΥΡΩΠΑΪΚΟ ΤΑΜΕΙΟ ΠΕΡΙΦΕΡΕΙΑΚΗΣ ΑΝΑΠΤΥΞΗΣ



**Η ΠΑΙΔΕΙΑ ΣΤΗΝ ΚΟΡΥΦΗ**  
Επιχειρησιακό Πρόγραμμα  
Εκπαίδευσης και Αρχικής  
Επαγγελματικής Κατάρτισης

Η παιδεία στην κορυφή

**D**Space **NTUA**

ETD 2007, Uppsala, Sweden, June 13 – 16, 2007

# The institutional repository of NTUA: challenges, concerns, pilot implementation and perspectives

Alexandros Koulouris, Dionysis Kokkinos, Angelos  
Anagnostopoulos, Maria Tanti

*National Technical University of Athens (NTUA)  
Central Library*

# The DL: challenge, vision

- Our *Digital Library* (DL) – DSpace installation
  - Unique Greek content digitized collection
  - Evolving *Institutional Repository* (IR)
    - Starting with ETDs
    - Goal: the bulk of grey literature
- The challenge: IR development
  - Currently, pilot implementation and evaluation
- NTUA Central Library vision
  - To provide open access to grey literature
  - To promote scientific research

# ETD depositing and writing specifications

- The NTUA Senate's decision (February 24, 2006) gives the Central Library
  - The right to collect and deposit the ETDs and
  - The privilege – responsibility to define the necessary specifications, standards and procedures for writing, e-submission, storage, deposit and access of ETDs
- We adhere to the existing ETD templates that each faculty has established but...
- We intent to propose and implement a flexible, integrated and unique template, based on the ETD guide (UNESCO)

# ETD e-submission

- Innovative procedure for Greek Universities
  - i.e. Aristotle University of Thessaloniki, Aegean University have already implemented e-submission
  - NTUA follows closely
- Primary goal – to establish new routines for the academic-scientific community regarding ETDs, e-submission and self-archiving
  - Waiting for the community's reaction...
- Implemented steps for e-submission
  - Web-based e-submission form including online help in Greek and English

# Prior to ETD e-submission...

- Detailed instructions for
  - Metadata entry, storage and accessibility
  - Intellectual property rights
  - Access points and policies
  - ETD e-submission form
    - Copyright and policy statement
    - Metadata
    - ETD file upload
- Additionally, instructions for submitting the printed ETD and its electronic version (CD/DVD) to the Central Library for archiving and backup reasons

# Web-based form

- Acts as a *proxy* between *DSpace* and the end-user
- The *user* (student) enters the metadata according to the necessary specifications, constrains, etc.
- The web-based form *fields* filled by the user are:
  - Selection of access policy by filling the copyright and access policy statement
  - Title, alternative title, author, supervisor, committees, keywords (*un-controlled*), release date, acceptance date, etc. (metadata)
- The form's fields are similar to *Dublin Core* fields used in the *DSpace* system for ETDs

# Web-based form: online help, technical characteristics

- Detailed online help (Greek, English) for
  - Metadata entry
  - Term definition
  - Access policies
  - Intellectual property rights
- Technical characteristics
  - JAVA technology
  - Postgres SQL Database
  - SUN Solaris Operating System
  - Apache Tomcat Web container



# Web-based form screenshot (development)

The screenshot displays an IDE window with the following components:

- Menu Bar:** File, Edit, View, Navigate, Source, Refactor, Build, Run, CVS, Subversion, Tools, Window, Help.
- Toolbar:** Standard IDE icons for file operations and development.
- Project Explorer:** Shows the project structure for 'ETDSubmit', including 'Web Pages', 'images', 'resources', and 'submit' sub-projects.
- Navigator:** Lists 'submit1' and associated beans like 'RequestBean1', 'SessionBean1', and 'ApplicationBean1'.
- Design View:** The main workspace showing a web form with the following fields:
  - Author's Details:**
    - \*Name (GR), \*Family Name (GR), \*Surname (GR)
    - \*Name (EN), \*Family Name (EN), \*Surname (EN)
    - Faculty(ies): abc, Department(s): abc
    - Lab(s): abc
    - Reg. Number: abc, E-Mail: abc
  - Details:**
    - Title: abc, Title in Greek: abc
    - Title in English: abc
    - Acceptance Date: 30/03/2007, Supervisor: abc
  - Buttons:** 'Next' and 'Previous' buttons at the bottom.
- Palette:** Contains 'Basic' widgets like Label, Static Text, Text Field, Text Area, and Button. It also shows a 'submit1' widget with properties like 'id', 'Appearance', 'Background', 'Page Layout', 'Style Sheet', 'Title', and 'Advanced' settings.
- Dynamic Help:** Shows 'About the Visual Design' and 'See Also' links.
- Bottom Panels:** Includes 'Usages', 'Search Results', 'Versioning - ETDSub...', 'Output - ET...', 'HTTP Monitor', and 'Breakpoints'.

# Metadata: entry, storage, accessibility, format

- User (student) enters the metadata to the *proxy*
- Librarians check, validate and import the metadata to the *DSpace* system and *OPAC*
- Two access points (*DSpace*, *OPAC*) for interoperability and integration reasons
  - *DSpace* is the primary access point
  - *OPAC* (uses *ALEPH*) acts as a backup in *UNIMARC* format
- Metadata format in *DSpace* – *Dublin Core qualified* (application profile)

# Access policies

User (student) **selects** the desired access policy:

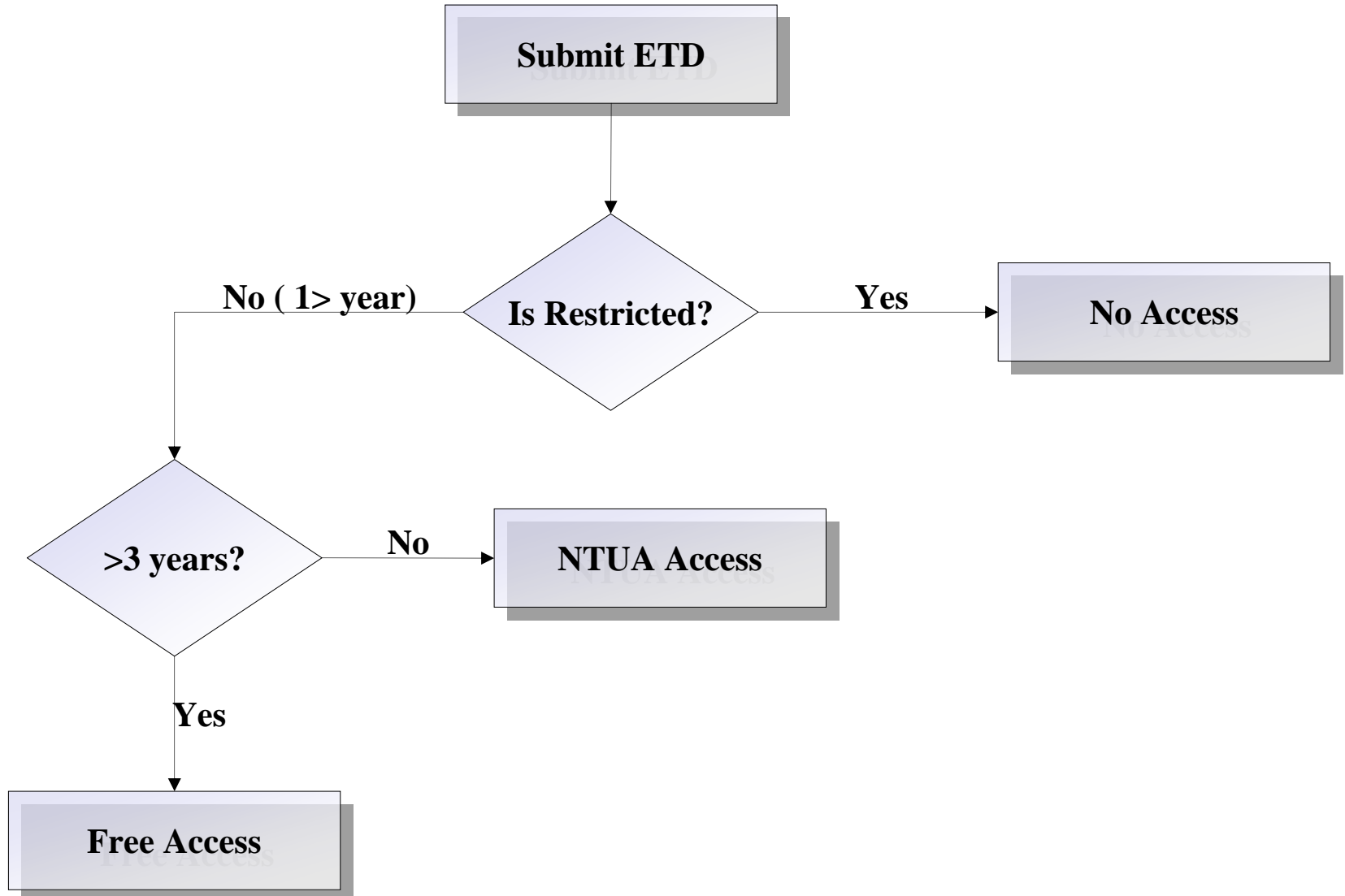
- *WWW access*
  - No restrictions, available to all
- *NTUA access* – restricted to NTUA community
  - On and off-campus, based on IP filtering
  - After **three** years automatically reverts to *WWW access*
- *No access* (i.e. patent pending, intellectual property uncertainties)
  - After **one** year, reverts to *NTUA access* and finally to *WWW access*

# XML access policies – documentation

- The policies are expressed in XML
  - *ETDFree-policy.xml* → WWW access
  - *ETDLocked-policy.xml* → NTUA access
  - *ETDRestricted-policy.xml* → No access
- User may view the policies through the metadata
  - *dc.rights* field
- The appropriate documentation on
  - Intellectual property and access policies
  - Metadata fields – format
  - User's help

is available at the *proxy* and at <http://dspace.lib.ntua.gr>

# Access policy workflow



# Current steps

- Formal promotion of ETDs and e-submission procedure
  - i.e. official letters, newsletters, mailing lists, web posting
- Pilot testing period (approximately six months) of IR for 2 faculties
- Evaluation, improvements
- Full functionality and coverage
  - 9 faculties
  - 42 depts.
  - 13.000 students, 4.000 post-graduate

# Future plans

- Personalization
- Integration of DL collections and services
- Integrated-federated searching feature to all heterogeneous resources (*DL, IR, OPAC, etc.*)
- Full-text searching capability
- Automated metadata batch importing to DSpace
- Submission of *code* and *GUI* modifications to the DSpace development community
- Participation in the *NDLTD Union Catalogue* and *movement*
- *New content*, i.e. papers, technical reports

# Contact info and short CVs

- *Alexandros Koulouris* is a d-librarian, developer/administrator of NTUA Central Library's DL. He is currently completing his Ph.D. in LIS, Dept. of Archive and Library Sciences, Ionian University, Corfu, Greece.  
[akoul@central.ntua.gr](mailto:akoul@central.ntua.gr), <http://users.ntua.gr/akoul>
- *Dionysis Kokkinos* is a d-librarian, Head of the Technical Support Dept. of NTUA Central Library. He holds a Masters degree (MSc) in LIS from Ionian University. He is also part-time lecturer at the LIS Dept. of Athens TEI.  
[dennis@central.ntua.gr](mailto:dennis@central.ntua.gr), <http://users.ntua.gr/dennis>
- *Angelos Anagnostopoulos* holds a Masters degree (MEng) in Electrical & Computer Engineering from NTUA. He currently occupies the position of analyst/developer for the NTUA Central Library's DSpace platform.  
[aanagnostopoulos@lib.ntua.gr](mailto:aanagnostopoulos@lib.ntua.gr)
- *Maria Tanti* is a metadata librarian, developer of the federated-integrated searching DL system. She holds a Masters degree (MSc) in LIS from Strathclyde University, Glasgow, Scotland.  
[mtanti@central.ntua.gr](mailto:mtanti@central.ntua.gr)