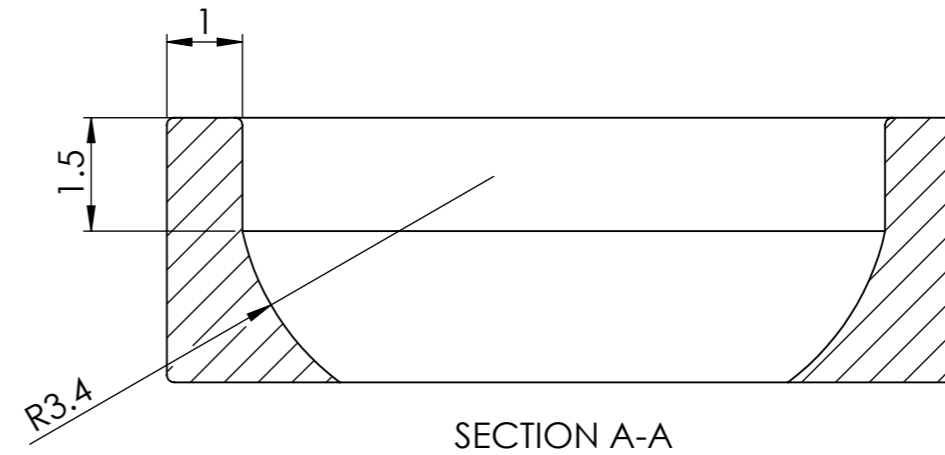
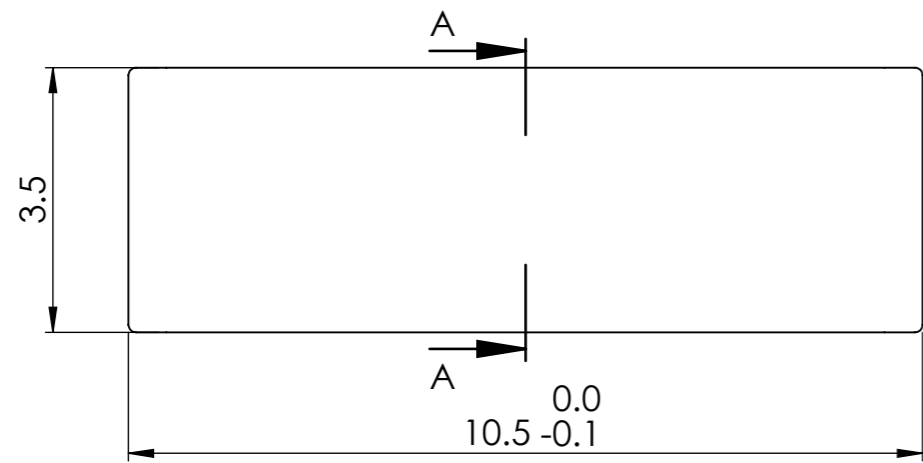
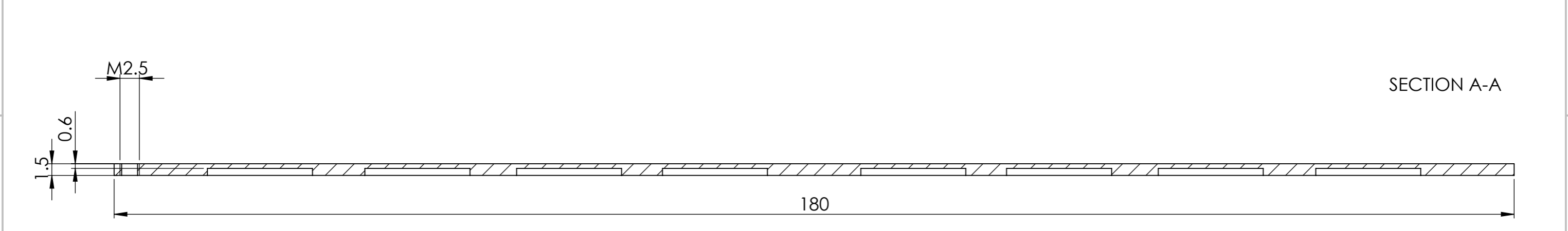
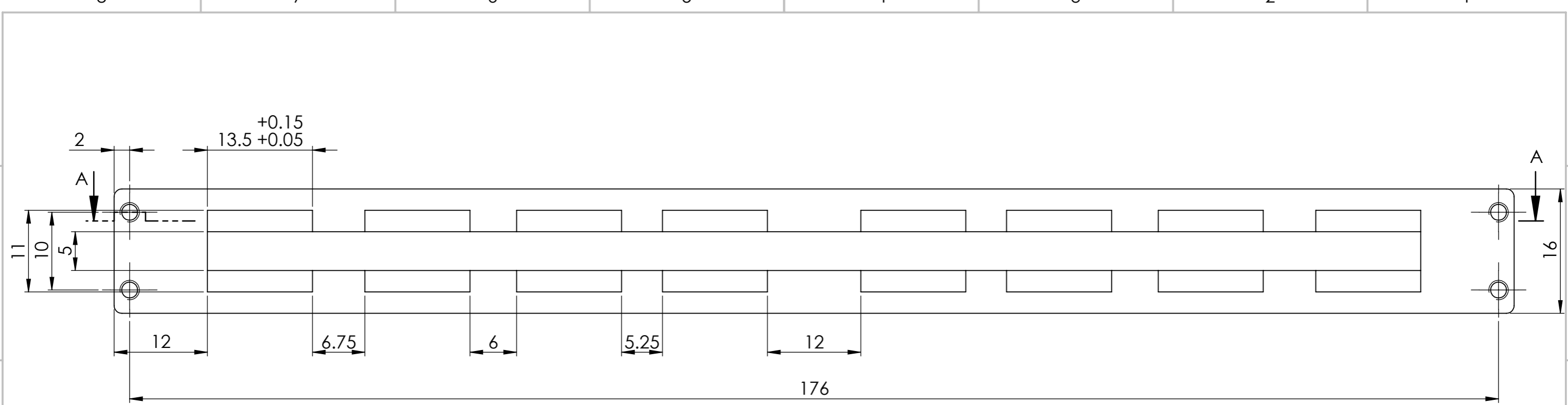


Thickness: 2mm

NTUA	Aris Konstantinidis	21/3/2022
Tolerances ISO 2768-fH	Superelastic Compression Plate	$\sqrt{\text{Ra 3.2}}$
Nitinol		Scale 2:1 Sheet 1 of 1



NTUA	Aris Konstantinidis	21/3/2022
Tolerances ISO 2768-mK	Sliding Insert	√ Ra 3.2
Grade 5 Titanium		Scale 10:1 Sheet 1 of 1



NTUA	Aris Konstantinidis	21/3/2022	
Tolerances ISO 2768-fH	Top Case	√ Ra 3.2	
Grade 5 Titanium		Scale 2:1	Sheet 1 of 1

8

7

6

5

4

3

2

1

F

F

E

E

D

D

C

C

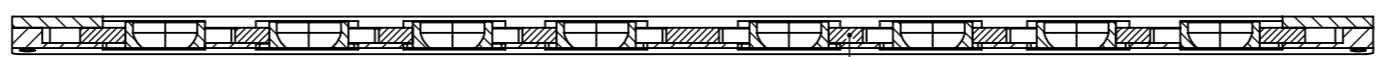
B

B

A

A

SECTION A-A

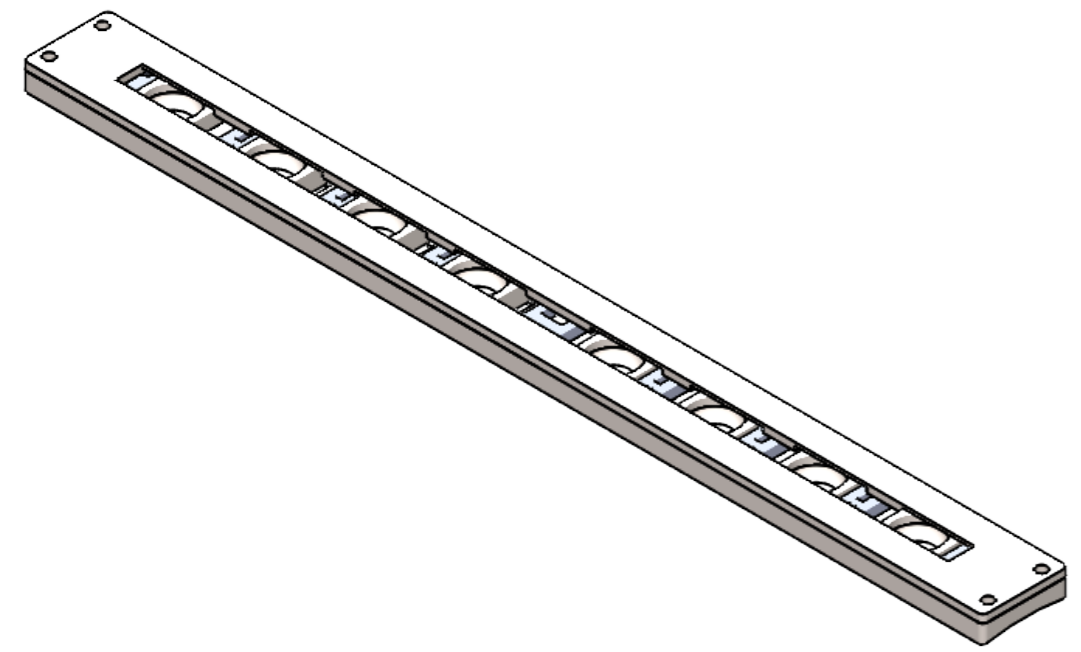
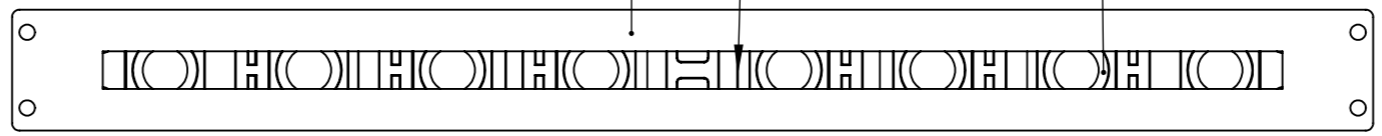
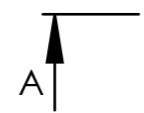


1

4

3

2



ITEM NO.	DESCRIPTION	QTY.
1	Superelastic Control Plate	1
2	Sliding insert	8
3	Bottom case	1
4	Top case	1

NTUA	Aris Konstantinidis	21/3/2022	
N/A	Plates Assembly	√ Ra 3.2	
N/A		Scale 1:1	Sheet 1 of 1

8

7

6

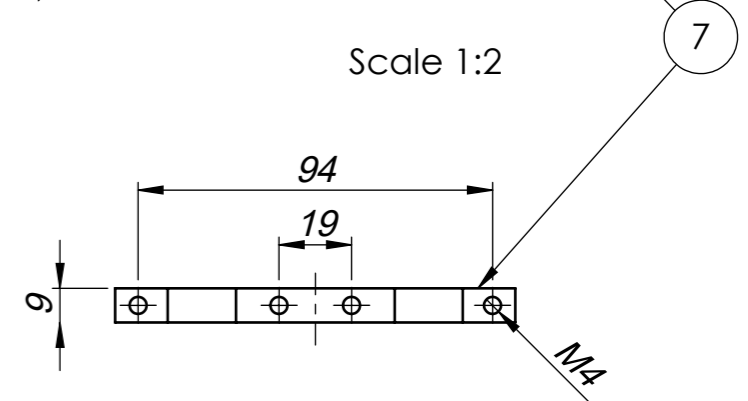
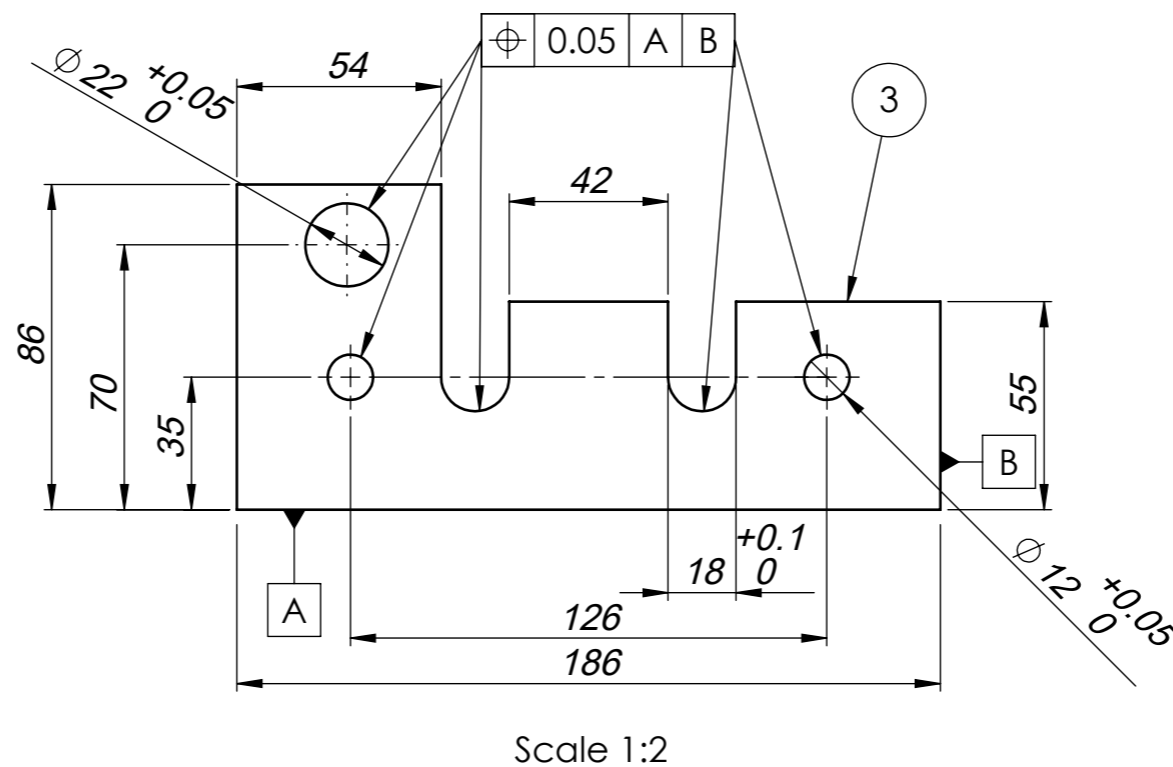
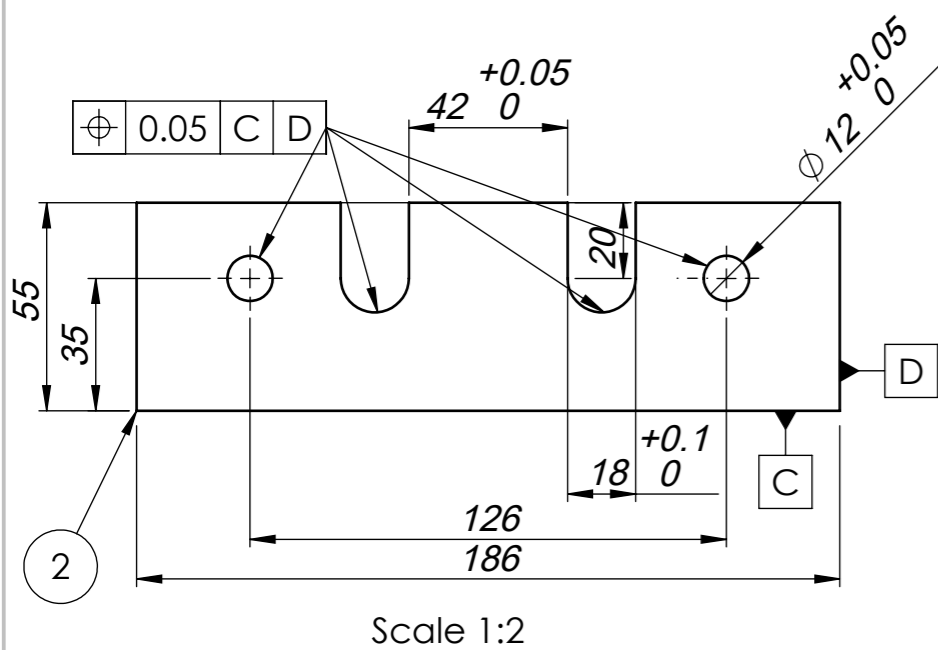
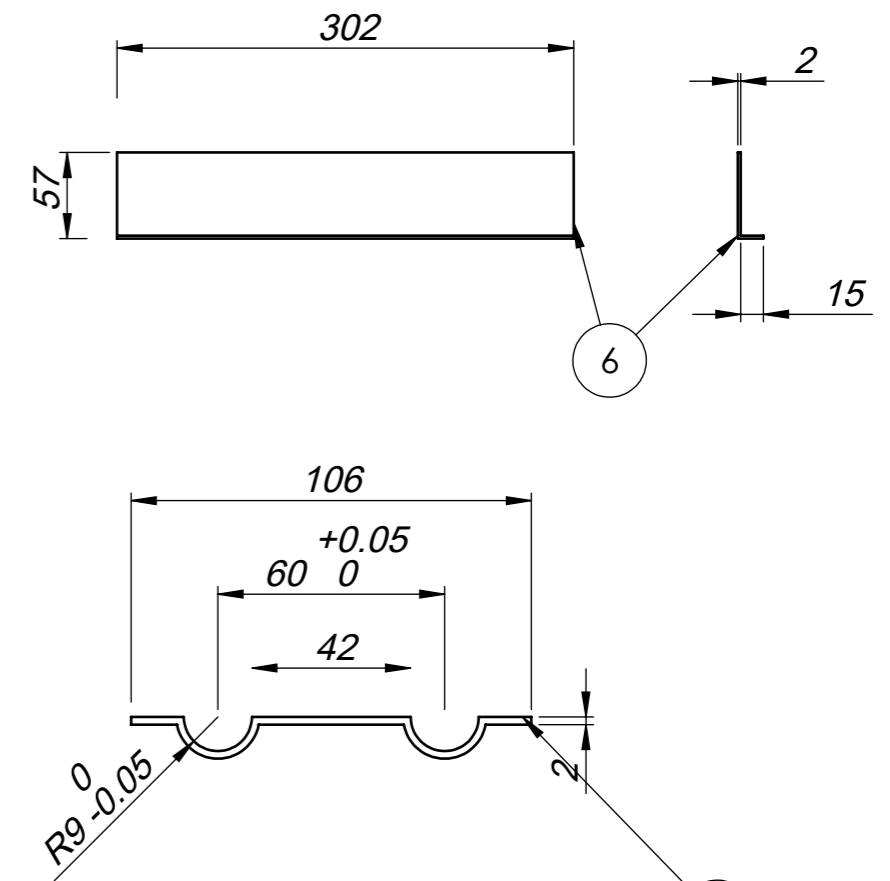
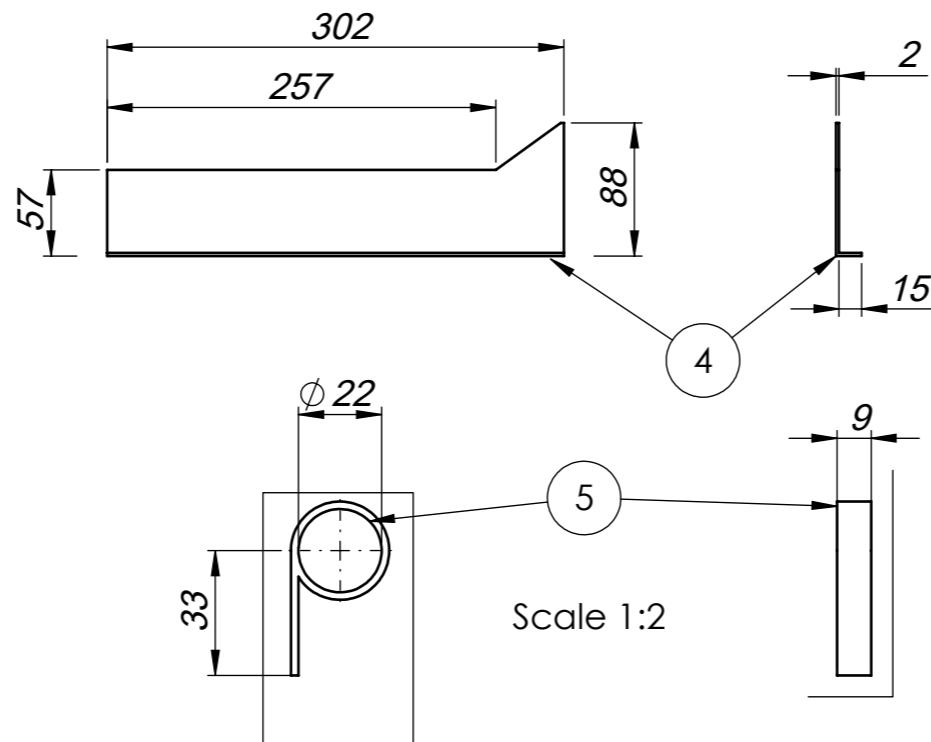
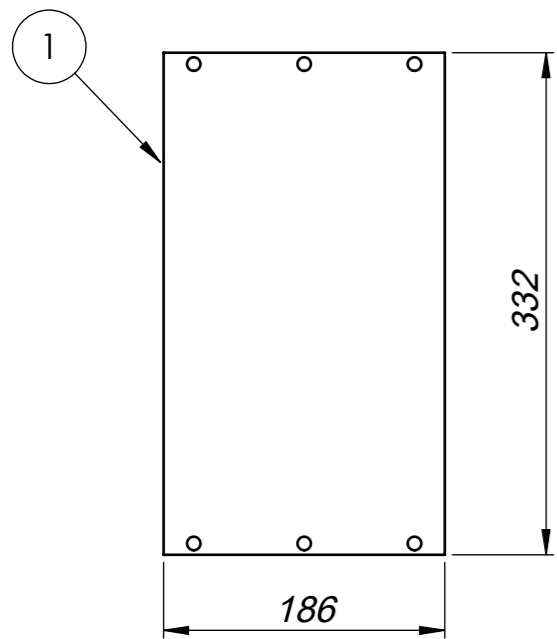
5

4

3

2

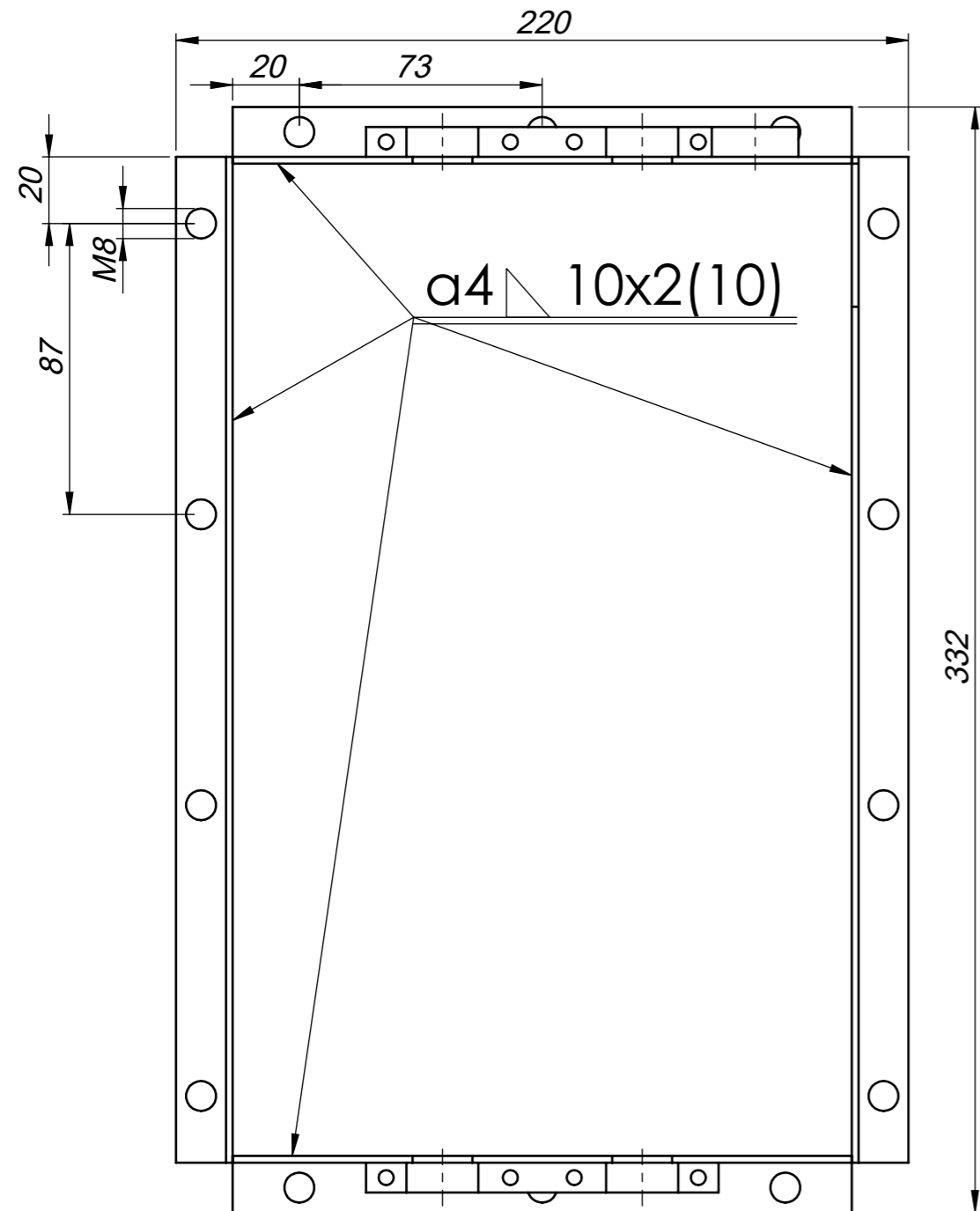
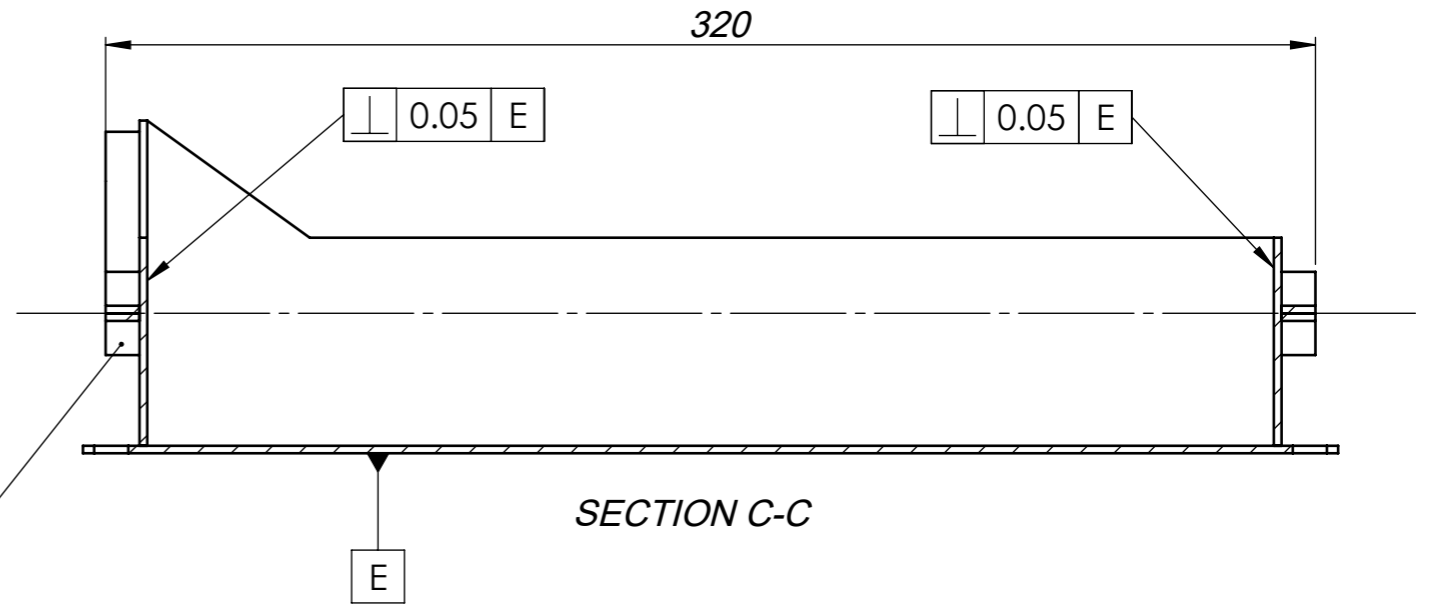
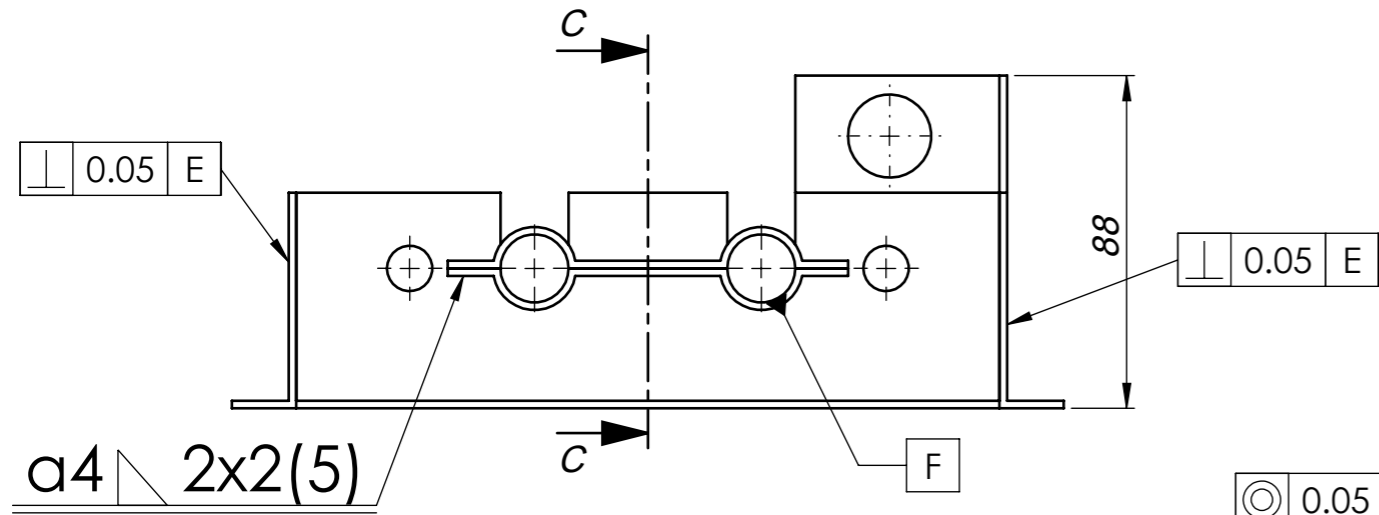
1



Item NO.	Description
1	Housing Base
2	Back Cover
3	Front Cover
4	Side Cover (right)
5	Supporting Base of Turning Tool
6	Side Cover (left)
7	Supporting Base of Lead Screws

Global Thickness
of all Parts 2mm

NTUA	Aris Konstantinidis	21/3/2022
Tolerances ISO 2768-mK	Stretching Tool Housing	√ Ra 3.2
AISI 347 Stainless Steel		Scale 1:5 Sheet 1 of 2



NTUA	Aris Konstantinidis	21/3/2022	
Tolerances ISO 2768-mK	Stretching Tool Housing	√ Ra 3.2	
N/A		Scale 1:2	Sheet 2 of 2

8

7

6

5

4

3

2

1

F

F

E

E

D

D

C

C

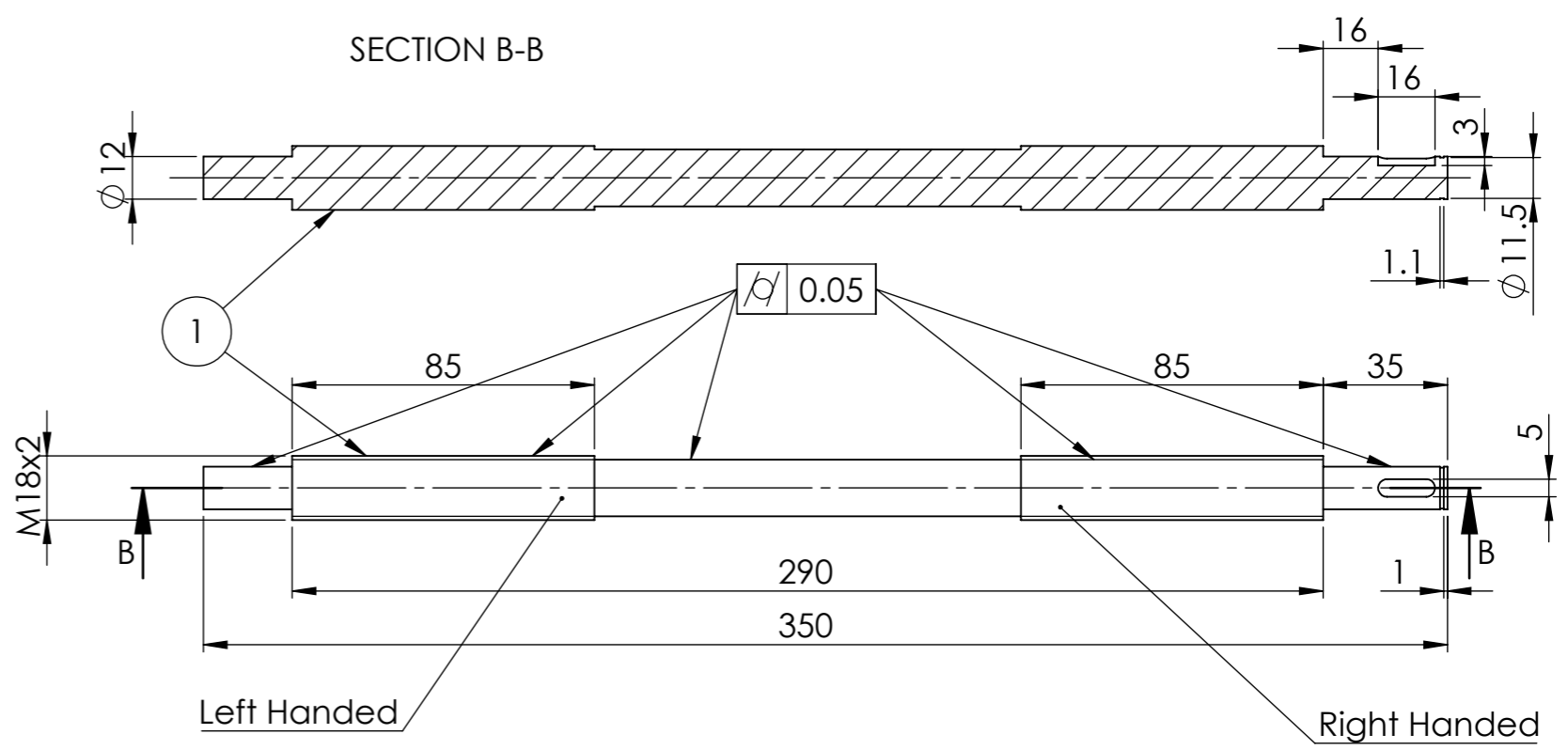
B

B

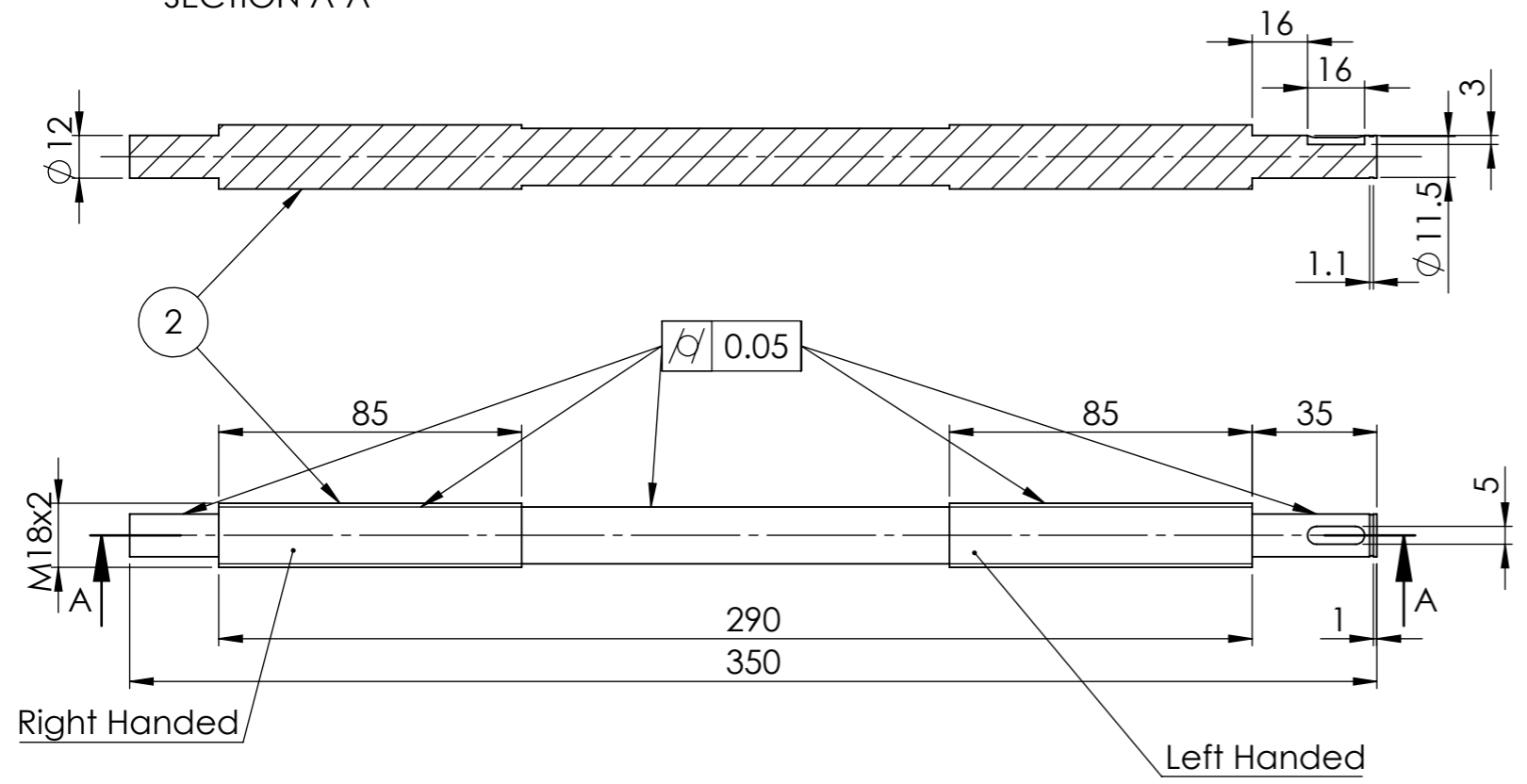
A

A

SECTION B-B



SECTION A-A



Item NO.	Description
1	Left Lead Screw
2	Right Lead Screw

NTUA	Aris Konstantinidis	21/3/2022
Tolerances ISO 2768-mK	Lead Screws	$\sqrt{Ra 3.2}$
AISI 347 Stainless Steel		Scale 1:2
		Sheet 1 of 1

8

7

6

5

4

3

2

1

8

7

6

5

4

3

2

1

F

E

D

C

B

A

F

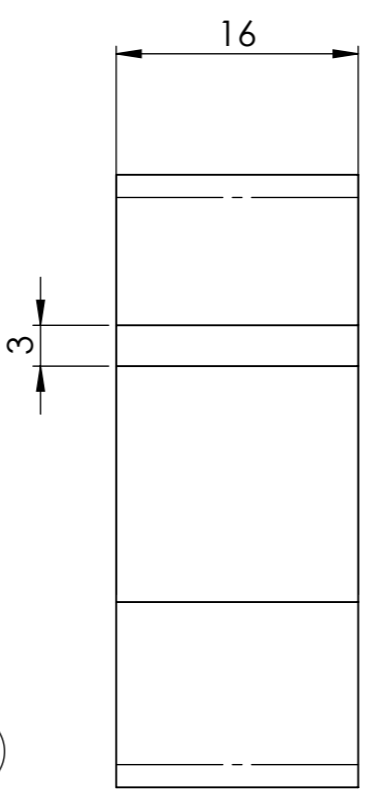
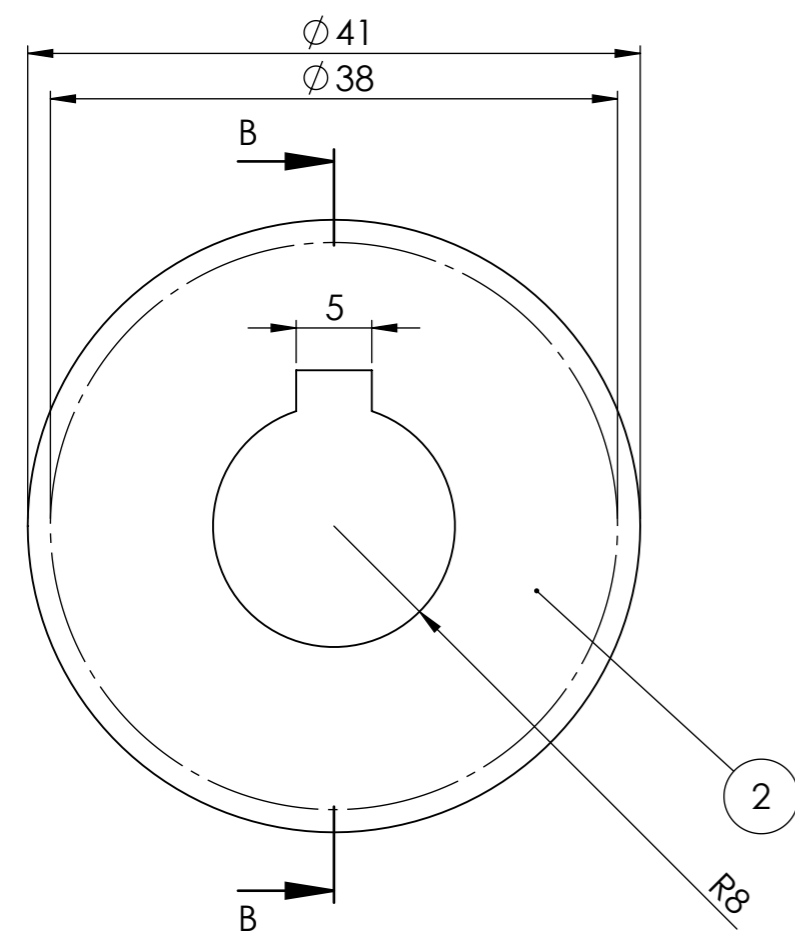
E

D

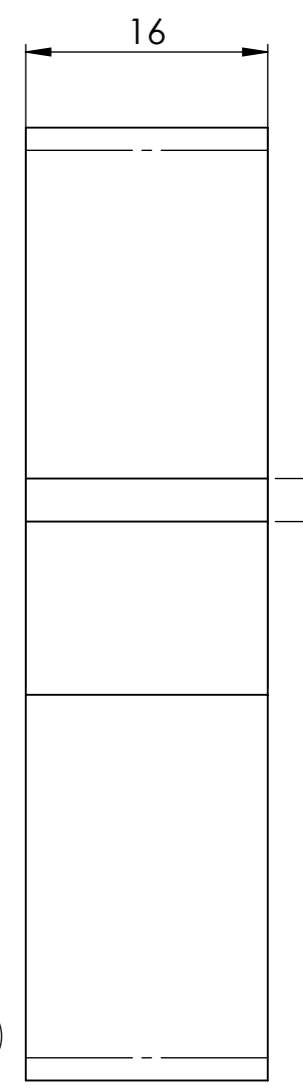
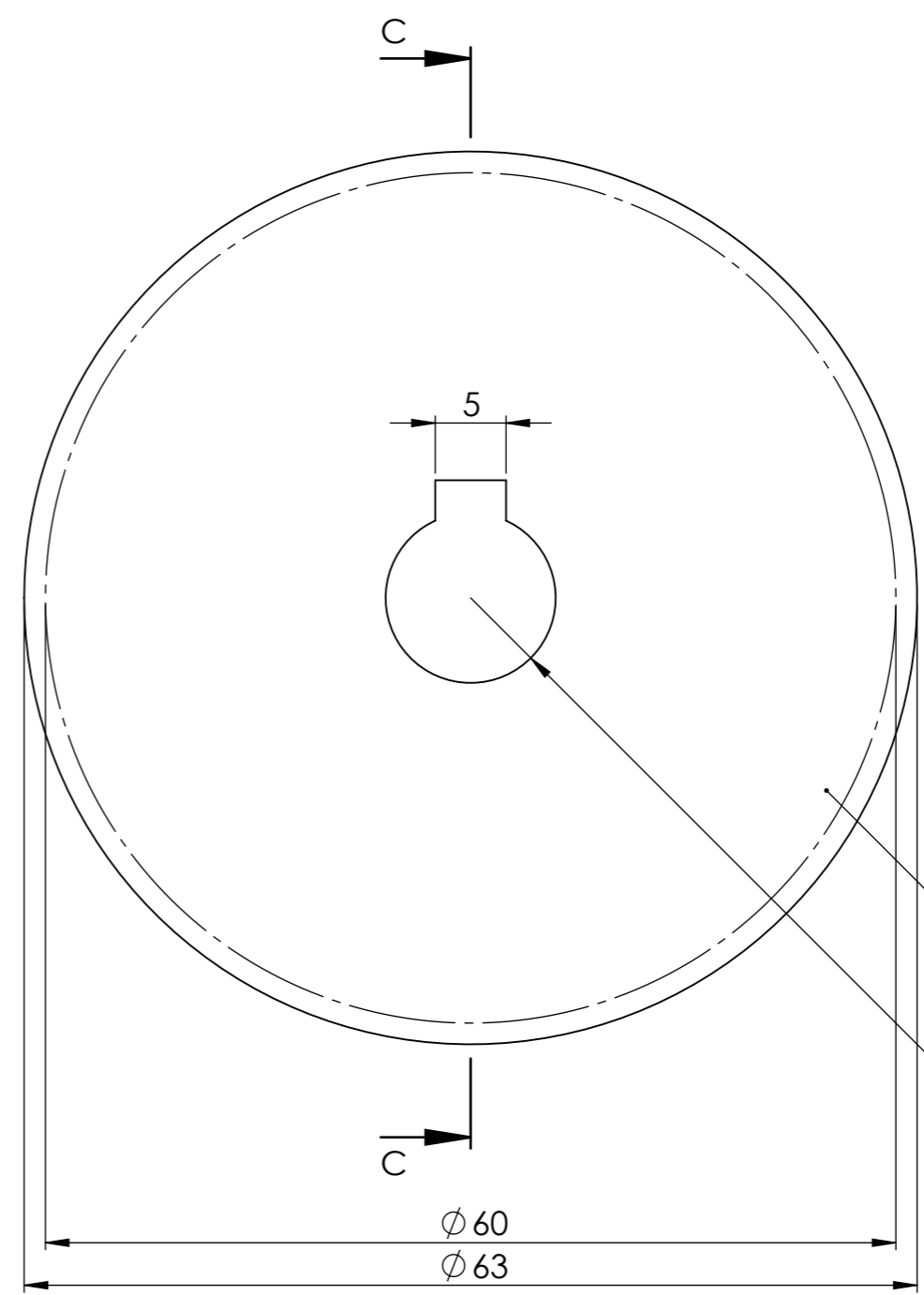
C

B

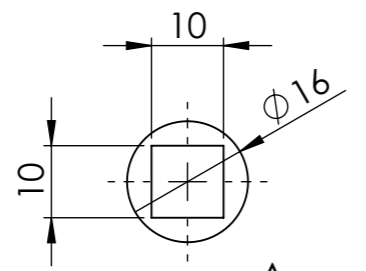
A



SECTION B-B

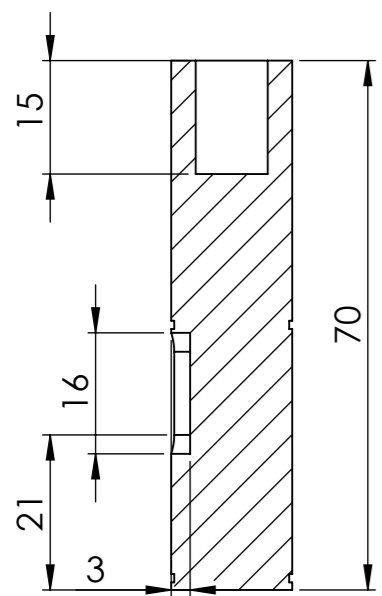


SECTION C-C

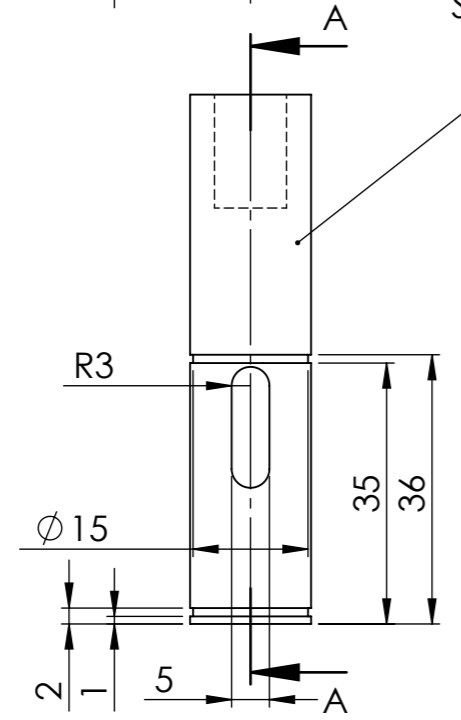


Scale 1:1

1



SECTION A-A



Item NO.	Description	Quant.
1	Tensioning Rod	1
2	Gear 1	1
3	Gear 2	2

NTUA	Aris Konstantinidis	21/3/2022
Tolerances ISO 2768-mK	Tensioning Rod, Gear 1, Gear 2	√ Ra 3.2
AISI 347 Stainless Steel		Scale 2:1
		Sheet 1 of 1

8 7 6 5 4 3 2 1

F

F

E

E

D

D

C

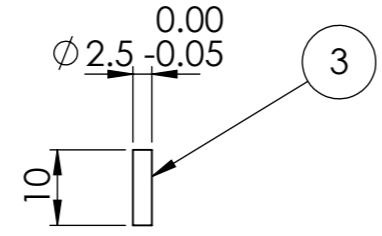
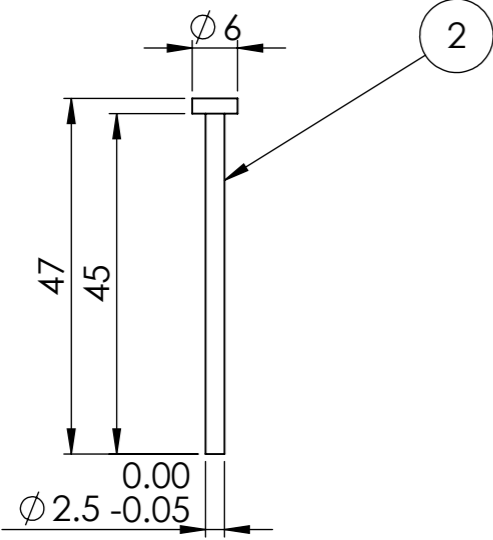
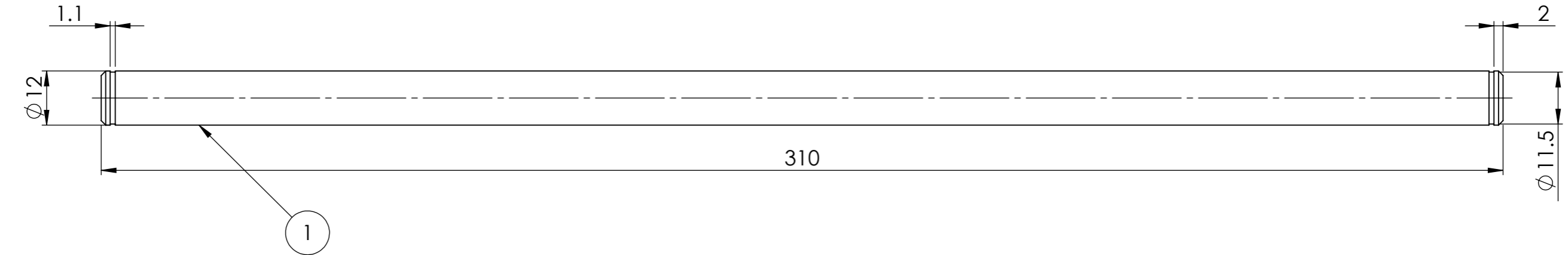
C

B

B

A

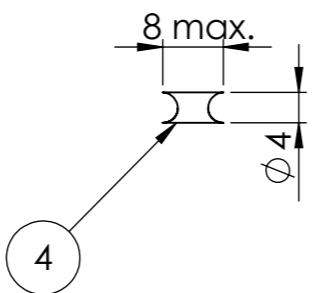
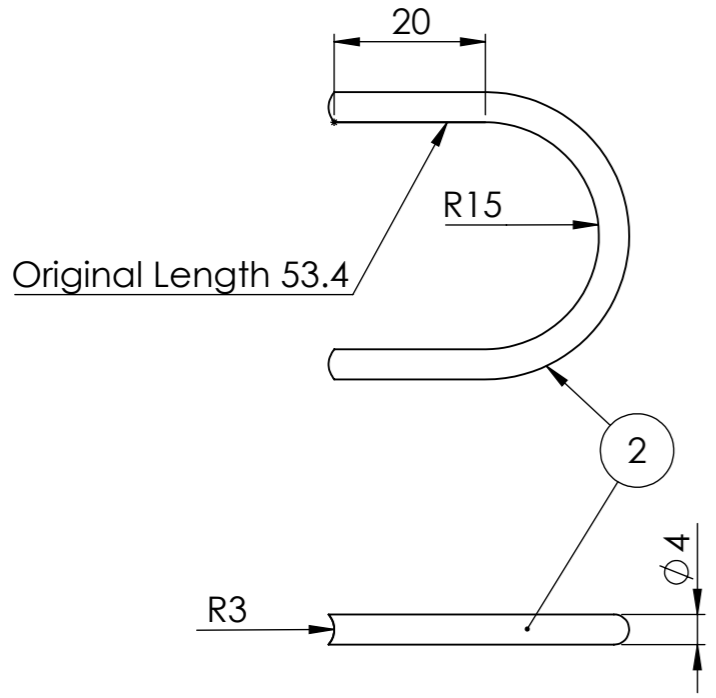
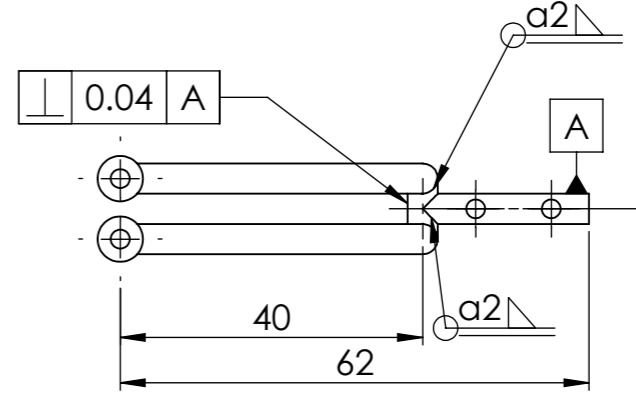
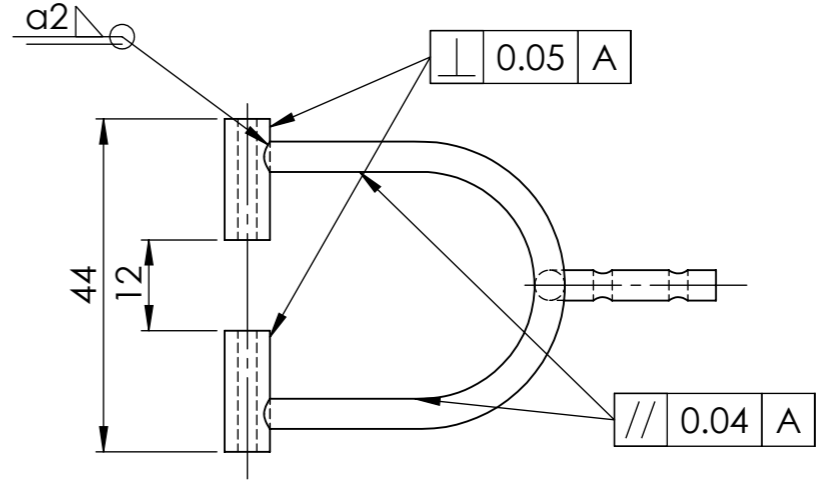
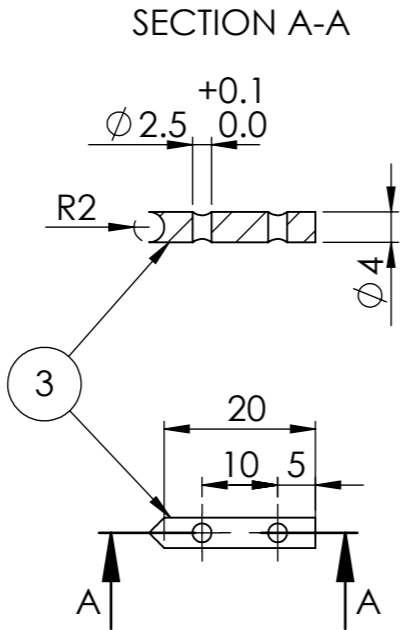
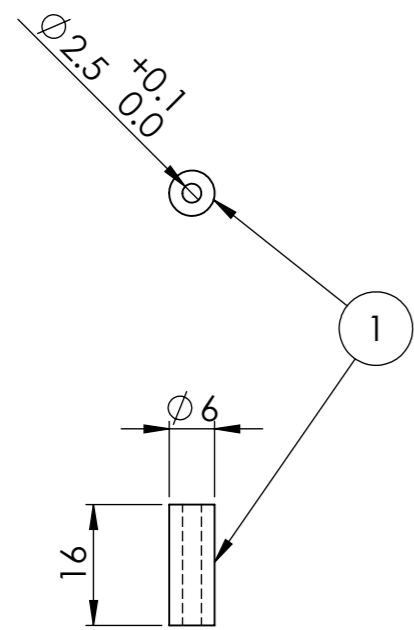
A



Item NO.	Description	Quant.
1	Alignment Rod	2
2	Long Pin	8
3	Stretch-Holding Pin	4

NTUA	Aris Konstantinidis	21/3/2022	
Tolerances ISO 2768-mK	Alignment Rod and Pins	√ Ra 3.2	
AISI 347 Stainless Steel		Scale 1:1	Sheet 1 of 1

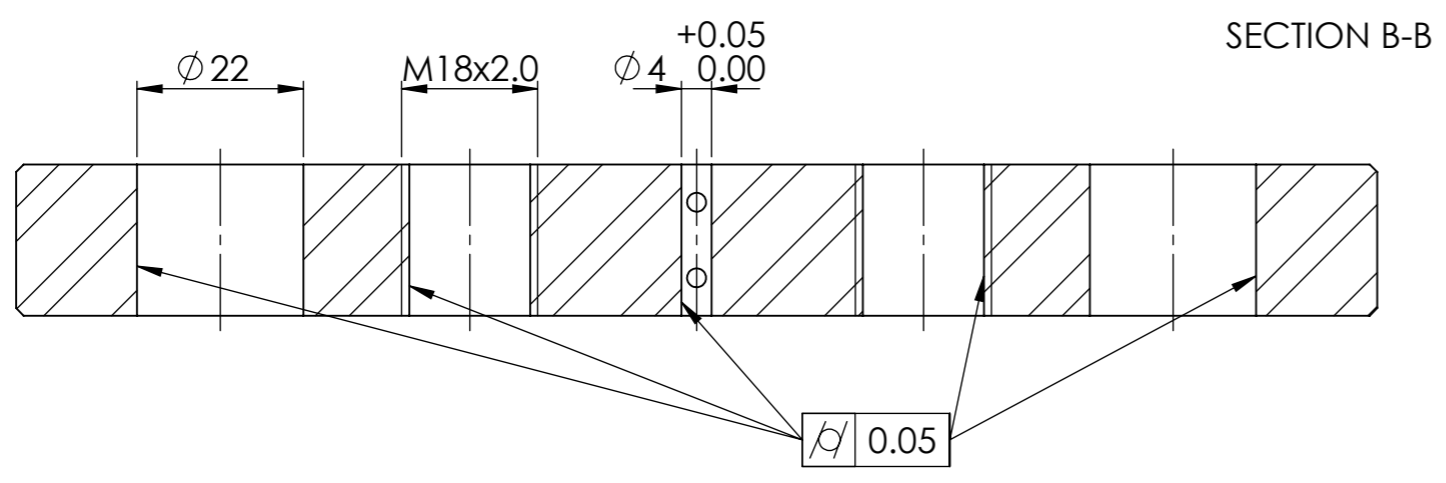
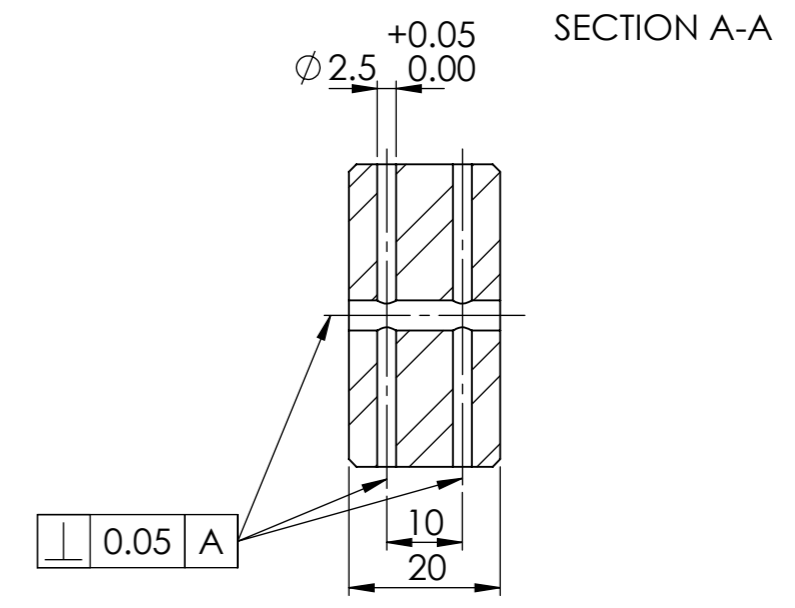
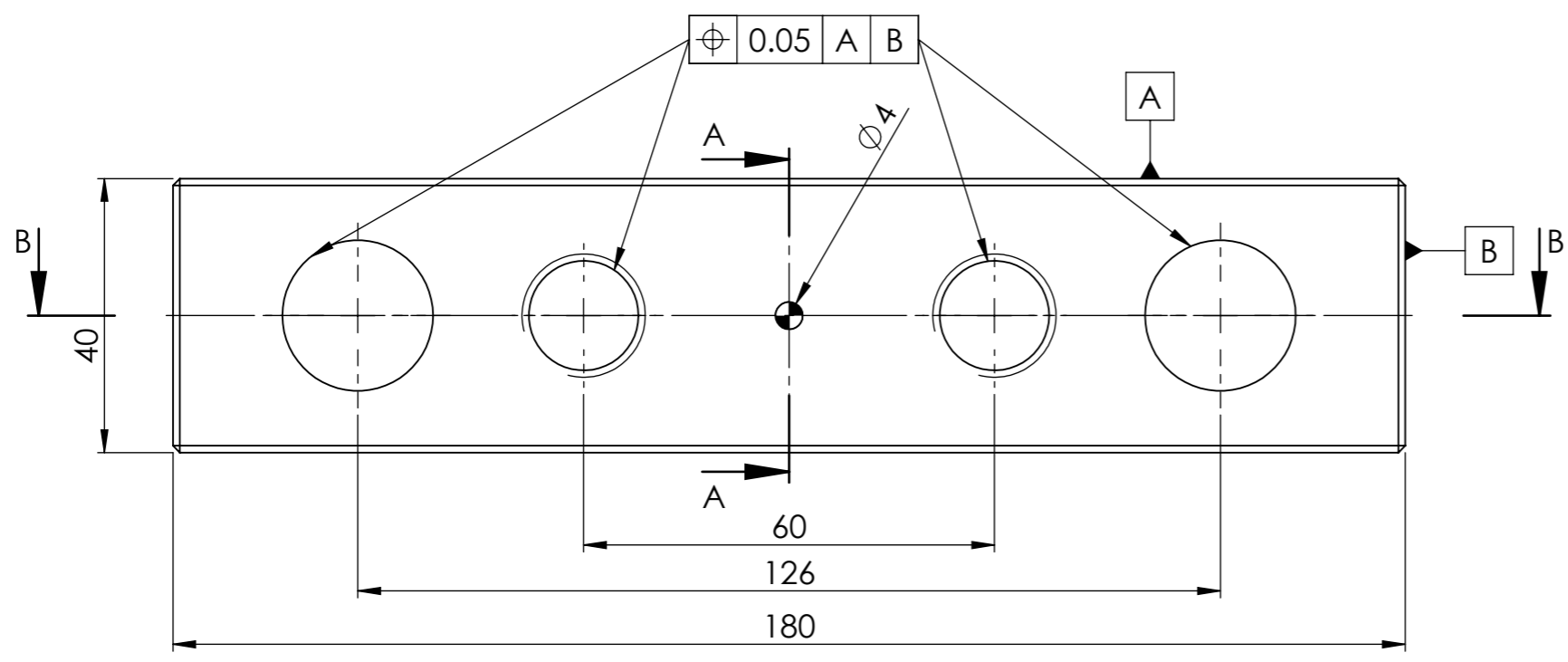
8 7 6 5 4 3 2 1



Item NO.	Description	Quant.
1	Pin Holder	4
2	Prong	2
3	Handle	1
4	Connector	1

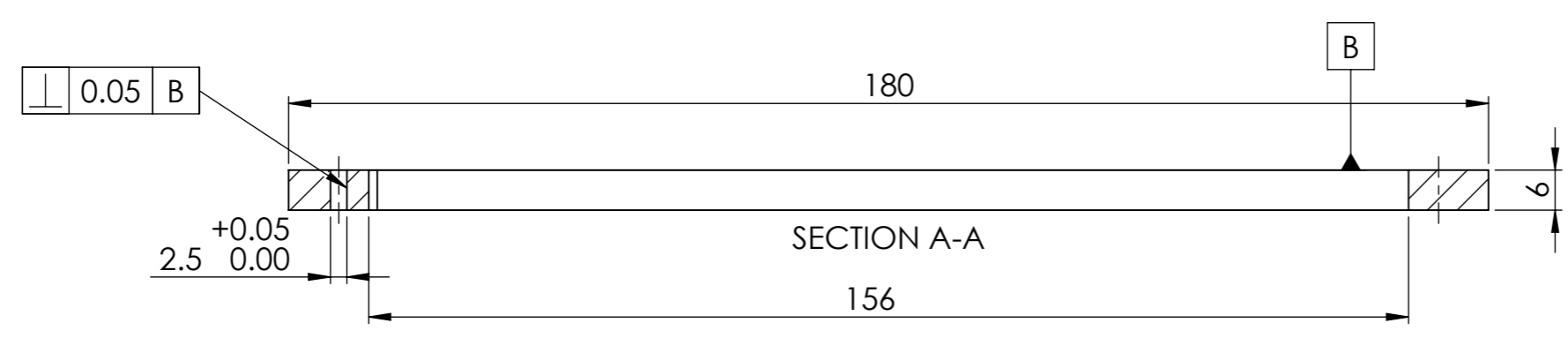
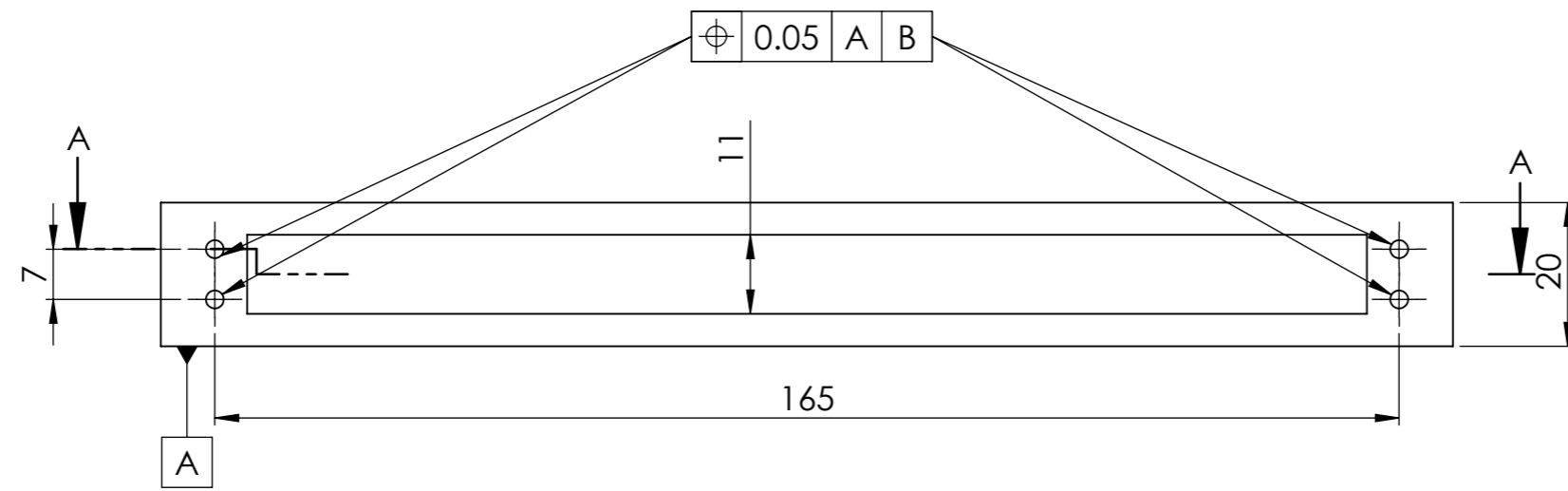
NTUA	Aris Konstantinidis	21/3/2022	
Tolerances ISO 2768-mK	Tensioning Fork	$\sqrt{\text{Ra 3.2}}$	
AISI 347 Stainless Steel		Scale 1:1	Sheet 1 of 1

8 7 6 5 4 3 2 1

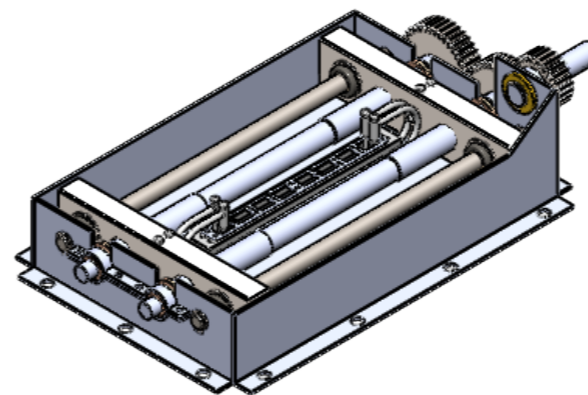
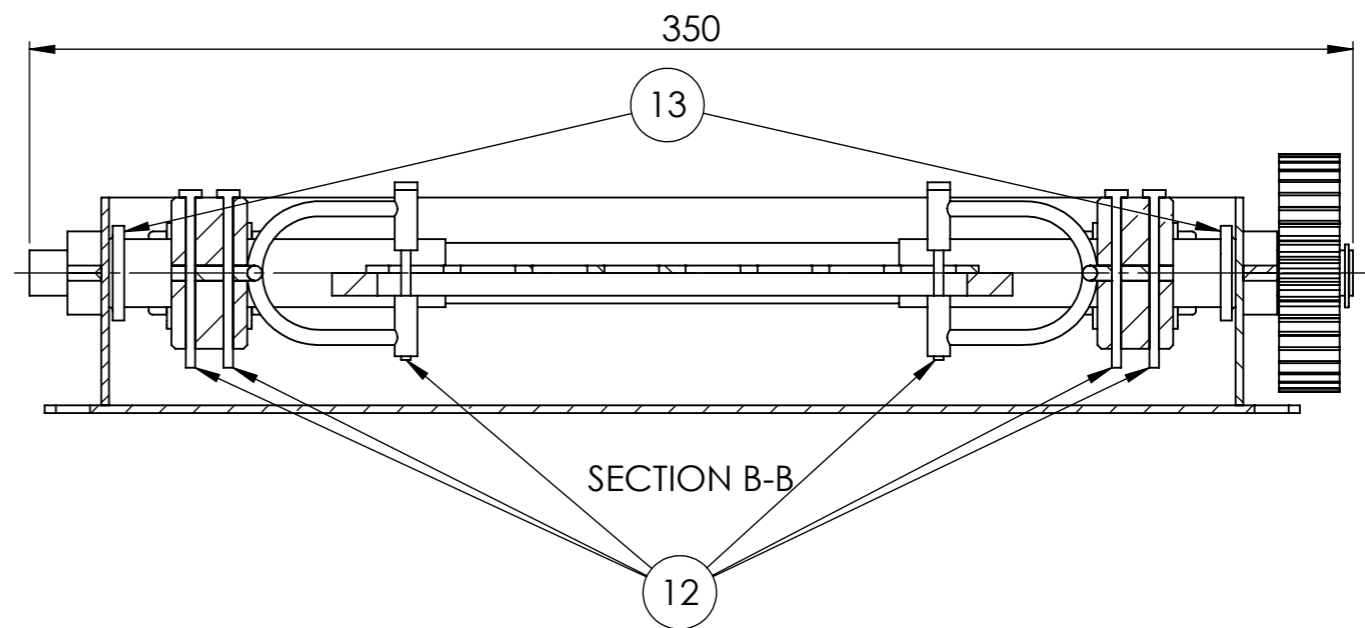
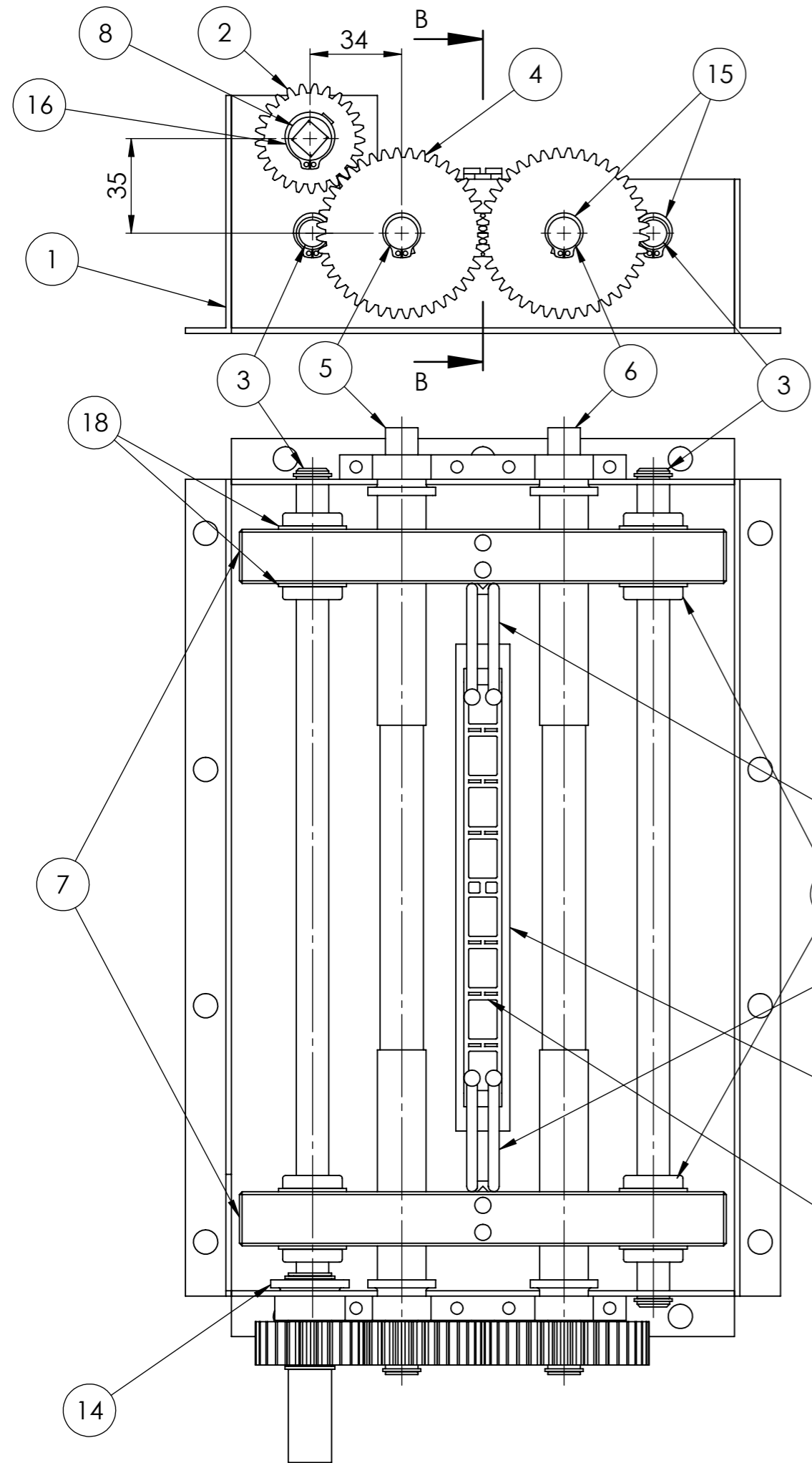


NTUA	Aris Konstantinidis	21/3/2022	
Tolerances ISO 2768-mK	Tensioning-Aligning Instrument	√ Ra 3.2	
AISI 347 Stainless Steel		Scale 1:1	Sheet 1 of 1

8 7 6 5 4 3 2 1



NTUA	Aris Konstantinidis	21/3/2022	
Tolerances ISO 2768-mK	Secondary Plate	√ Ra 3.2	
AISI 347 Stainless Steel		Scale 1:1	Sheet 1 of 1



Item No.	Description	Quant.
1	Housing	1
2	Gear 1	1
3	Alignment Rod	2
4	Gear 2	2
5	Left Lead Screw	1
6	Right Lead Screw	1
7	Stretching-Aligning Instrument	2
8	Tensioning Rod	1
9	Stretching Fork	2
10	Superelastic Nitinol	1
11	Secondary Plate	1
12	Long Pin	8
13	Lead Screw Bushing	4
14	Tensioning Rod Bushing	1
15	Circlip DIN 471 - 12x1	6
16	Circlip DIN 471 - 16x1	2
17	RJUM-01-12	4
18	Circlip DIN 471 - 22x1.2	8

NTUA	Aris Konstantinidis	21/3/2022	
N/A	Tensioning Tool Assembly	√ Ra 3.2	
N/A		Scale 1:2	Sheet 1 of 1