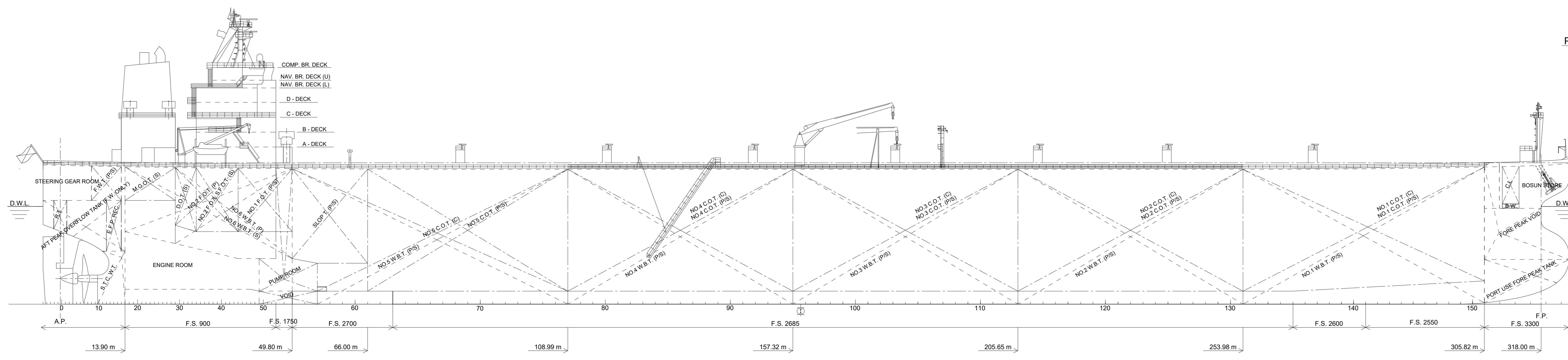
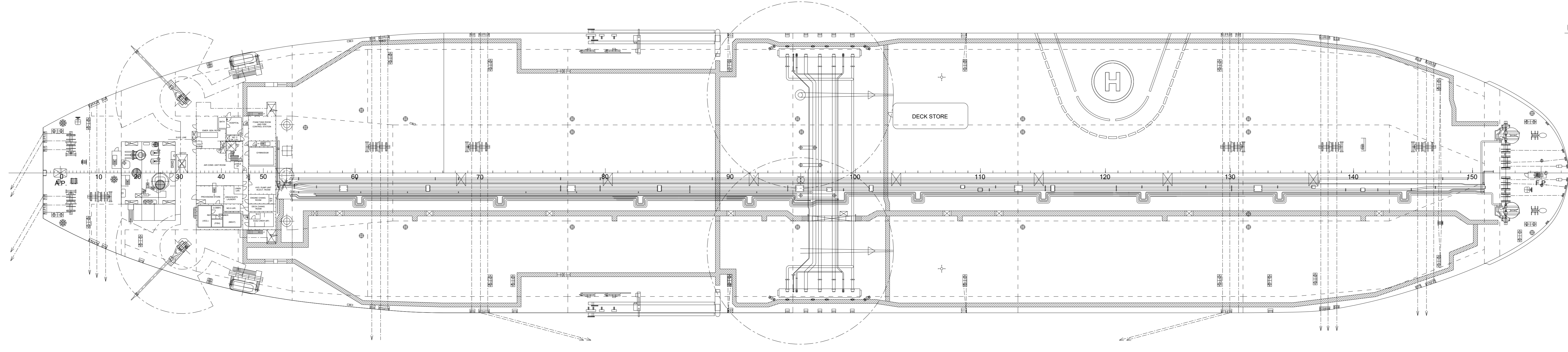
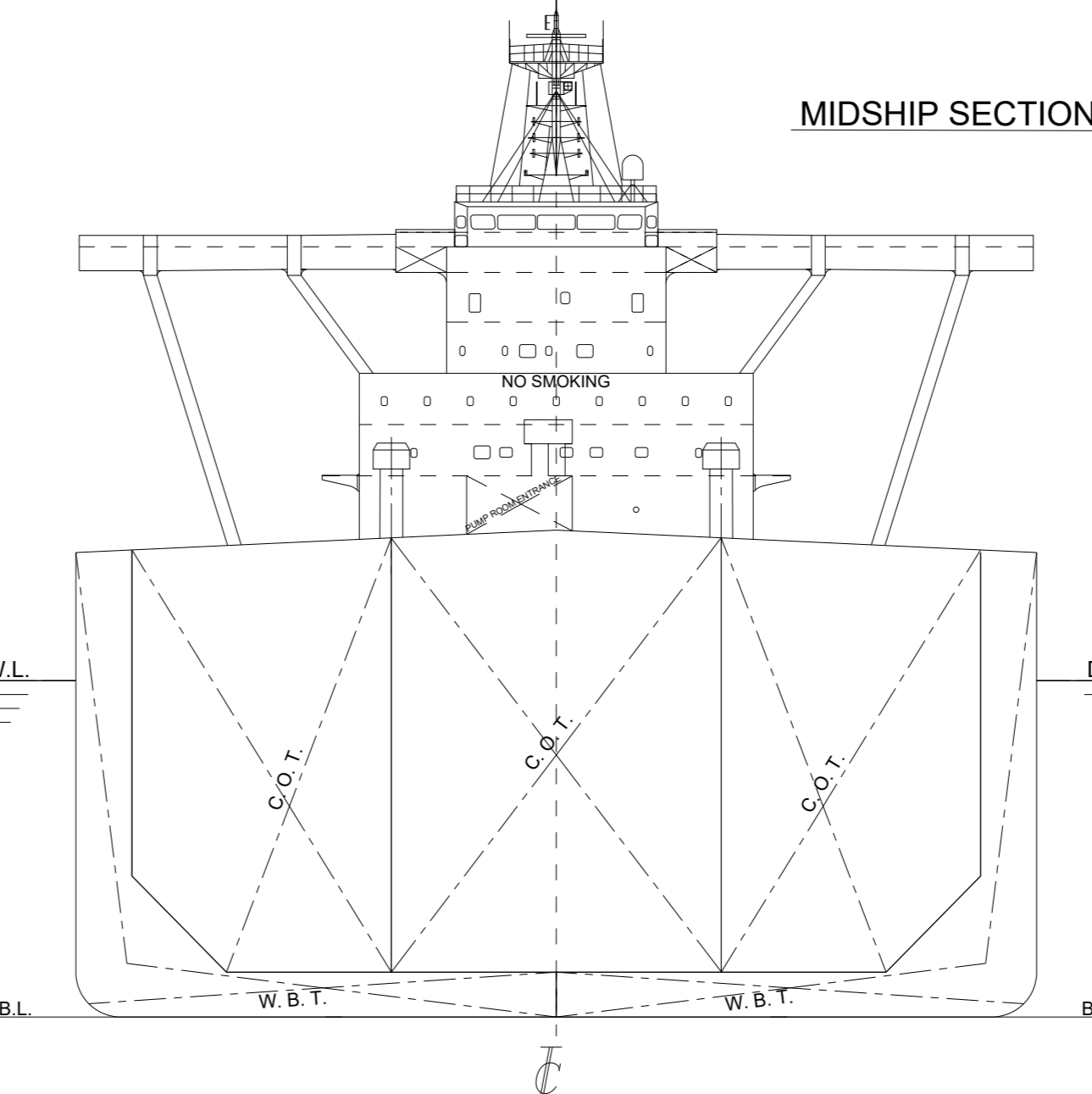


# ARGYRO CAPACITY PLAN



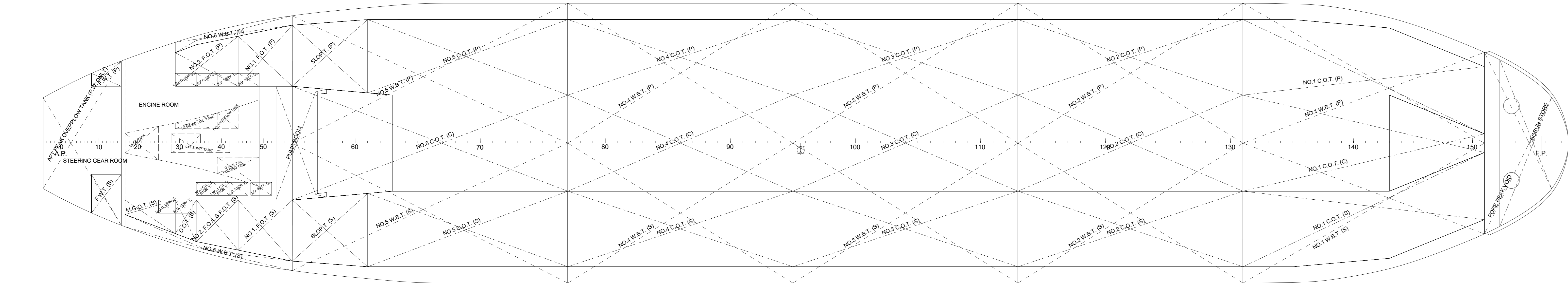
PROFILE MIDSHIP SECTION



UPPER DECK

## PRINCIPAL PARTICULARS

LENGTH OVERALL	327.70 m
LENGTH BETWEEN PERPENDICULARS	318.00 m
BREADTH MOLDED	60.00 m
DEPTH MOLDED	29.00 m
SUMMER LOAD DRAFT MOLDED	21.00 m
BLOCK COEFFICIENT AT SUMMER DRAFT	0.810
LIGHTSHIP	42491.0 t
DISPLACEMENT	332809.0 t
DEADWEIGHT	290318.0 t
C.O.T./SLOP T. CAPACITY	327757.5 m <sup>3</sup>
FREEBOARD	TYPE A
SERVICE SPEED	15.00 kn
MAIN ENGINE	MAN B&W 7C80ME-C9.2
MAXIMUM CONTINUOUS RATING	23902.811 kW X 64.4 min. <sup>-1</sup>
PROPELLER DIAMETER	10.40 m



TANK

Class	Grade	Deck Department	Engine Department	Other Department	Number	Cabin
Captain Class	Captain	1	C/Engineer	1	2	2
Senior Officer	1/Officer	1	2/E/Engineer	1	2	2
Junior Officer	2/Officer	1	3/E/Engineer	1		
	3/Officer	1	4/E/Engineer	1		
			Electrician	1		
			4	5		
Sum					9	9
	Boatman	1	Nav. Officer	1	C/Cook	1
	Pump man	1				
Crew	Able Seaman	3	Motor man	3	Cook	1
	Ordinary Seaman	1			Boy	2
Sum		8	4	4	1	16
Junior Officer	Owner				1	1
	Plat				1	1
Crew	Spare				1	1
Sum					3	3
Total on Board					28 Persons	
Seas Crew (Except from the Complement)					6 Persons	

Item	Freeboard (m)	Draft (m)	Displacement (t)	Deadweight (t)
Summer	8.034	21.000	332809.0	290318.0
Tropical	7.896	21.138	335230.0	292739.0
Winter	8.172	20.862	330389.0	287898.0
Winter North Atlantic	8.172	20.862	330389.0	287898.0
Fresh Water	7.985	21.049	333669.0	291178.0

Item	Location (Pl. No.)	Capacity (100% Full) (m <sup>3</sup> )	Capacity (80% Full) (m <sup>3</sup> )	LCG (m)	TCG (m)	YCG (m)	FSM (t/m <sup>3</sup> )
NO.1 C.O.T. (U)	131-151	23922.806	23922.748	279.000	0.000	18.829	2458.889
NO.1 C.O.T. (L)	131-151	26268.269	26268.202	279.000	-15.252	17.900	1833.881
NO.2 C.O.T. (U)	131-151	16246.996	16246.937	279.600	15.252	17.900	1833.881
NO.2 C.O.T. (L)	131-151	26664.438	26664.371	279.600	0.000	16.480	3047.530
NO.3 C.O.T. (U)	131-151	19679.254	19679.195	229.833	-18.099	18.099	1505.138
NO.3 C.O.T. (L)	131-151	18497.528	18497.469	229.833	18.099	18.099	1505.138
NO.4 C.O.T. (U)	91-113	26664.447	26664.380	181.485	0.000	16.480	3047.540
NO.4 C.O.T. (L)	91-113	19679.247	19679.188	181.485	-18.099	18.099	1505.143
NO.5 C.O.T. (U)	91-113	19679.247	19679.188	181.485	18.099	18.099	1505.143
NO.5 C.O.T. (L)	91-113	26664.447	26664.380	181.485	0.000	16.480	3047.540
NO.6 C.O.T. (U)	77-95	32956.182	32956.123	79.331	0.000	16.737	4223.828
NO.6 C.O.T. (L)	77-95	16492.994	16492.935	88.093	-17.808	17.292	1333.761
NO.7 C.O.T. (U)	41-77	16492.994	16492.935	88.093	17.808	17.292	1333.761
NO.8 C.O.T. (U)	51-63	38203.975	38203.916	58.428	17.837	20.552	386.464
NO.8 C.O.T. (L)	51-63	38203.975	38203.916	58.428	-17.837	20.552	386.464
Total		327757.473	327757.387	175.139	0.000	-16.870	23059.184

Item	Location (Pl. No.)	Capacity (100% Full) (m <sup>3</sup> )	Weight (80% Full) (t)	LCG (m)	TCG (m)	YCG (m)	FSM (t/m <sup>3</sup> )
NO.1 F.O.T. (U)	44-55	1564.992	1550.108	44.414	-17.945	23.700	1035.177
NO.1 F.O.T. (L)	176-206	1624.844	1624.844	44.232	17.245	23.917	1035.177
NO.2 F.O.T. (U)	29-44	1229.392	1214.719	33.099	-16.787	22.929	923.315
NO.2 F.O.T. (L)	34-44	1000.404	987.422	33.885	16.442	23.225	707.744
F.O. SERV. T. (U)	44-49	80.262	78.724	40.450	-13.600	25.500	8.047
F.O. SERV. T. (L)	39-44	80.262	78.724	39.950	-13.600	25.500	8.047
L.S.O. SERV. T. (U)	39-44	80.262	78.724	39.950	13.600	25.500	8.047
L.S.O. SERV. T. (L)	29-34	80.262	78.724	28.950	-13.600	25.500	8.047
Total		6038.371	6038.011	39.434	-1.009	23.181	4033.463

Item	Location (Pl. No.)	Capacity (100% Full) (m <sup>3</sup> )	Weight (80% Full) (t)	LCG (m)	TCG (m)	YCG (m)	FSM (t/m <sup>3</sup> )
D.O. T. (U)	29-34	303.443	288.092	27.126	-16.252	23.256	183.894
D.O. SERV. T. (U)	29-33	64.220	64.220	28.500	13.600	25.500	6.325
Total		367.663	352.312	27.075	-13.796	23.759	190.219

Item	Location (Pl. No.)	Capacity (100% Full) (m <sup>3</sup> )	Weight (80% Full) (t)	LCG (m)	TCG (m)	YCG (m)	FSM (t/m <sup>3</sup> )
M.G.O. T. (U)	71-79	332.250	281.143	19.420	-15.000	26.119	143.093
M.G.O. SERV. T. (U)	25-29	40.229	40.229	33.500	-13.600	25.500	1.883
Total		372.479	321.372	19.968	-14.841	26.037	144.976

Item	Location (Pl. No.)	Capacity (100% Full) (m <sup>3</sup> )	Weight (80% Full) (t)	LCG (m)	TCG (m)	YCG (m)	FSM (t/m <sup>3</sup> )
L.O. SERV. T. (U)	47-52	61.740	52.388	43.150	9.800	24.800	7.400
L.O. SERV. T. (L)	38-46.333	53.308	45.749	38.350	9.800	24.800	6.421
L.O. SERV. T. (U)	28-42	100.872	85.246	29.250	0.339	1.437	41.380
NO.1 C.O.T. (U)	38-42	40.392	42.320	34.000	9.800	24.800	5.937
NO.2 C.O.T. (U)	34-38	40.392	42.320	33.000	9.800	24.800	5.937
Total		314.004	268.243	34.589	6.769	17.316	67.264

Item	Location (Pl. No.)	Capacity (100% Full) (m <sup>3</sup> )	Weight (80% Full) (t)	LCG (m)	TCG (m)	YCG (m)	FSM (t/m <sup>3</sup> )
F.W.T. (U)	8.16	184.562	184.562	10.253	-14.245	20.061	44.934
F.W.T. (L)	8.16	443.884	443.884	10.047	13.444	26.109	477.939
PORT USE FORE PEAK TANK	42-47	2807.148	2807.148	6.233	-0.126	39.840	2907.879
Total		3235.594	3235.594	6.985	9.062	30.250	3460.511

Item	Location (Pl. No.)	Capacity (100% Full) (m <sup>3</sup> )	Weight (80% Full) (t)	LCG (m)	TCG (m)	YCG (m)	FSM (t/m <sup>3</sup> )
NO.1 W.B.T. (U)	131-151	8504.857	8717.478	279.212	-17.875	9.931	5278.214
NO.1 W.B.T. (L)	131-151	8504.857	8717.478	279.212	17.875	9.931	5278.214
NO.2 W.B.T. (U)	131-151	9015.722	9241.135	229.656	-22.046	8.748	28635.203
NO.2 W.B.T. (L)	131-151	9015.722	9241.135	229.656	22.046	8.748	28635.203
NO.3 W.B.T. (U)	91-113	9004.121	9231.474	181.485	-22.300	8.686	131008.022
NO.3 W.B.T. (L)	91-113	9004.121	9231.474	181.485	22.300	8.686	131008.022
NO.4 W.B.T. (U)	77-95	9014.650	9240.017	133.289	-22.042	8.749	28017.233
NO.4 W.B.T. (L)	77-95	9014.650	9240.017	133.289	22.042	8.749	28017.233
NO.5 W.B.T. (U)	41-77	9246.800	9478.061	83.893	-20.556	8.602	6794.323
NO.5 W.B.T. (L)	41-77	9246.800	9478.061	83.893	20.556	8.602	6794.323
NO.6 W.B.T. (U)	29-55	1531.871	1569.843	18.850	-15.438	18.061	1466.015
NO.6 W.B.T. (L)	17-55	2077.225	2129.155	13.806	18.500	18.942	2300.162
PORT USE FORE PEAK TANK	302-40	2029.102	2029.102	312.174	0.000	8.251	14807.284
Total		95387.440	97172.134	170.649	0.002	9.431	90701.362

Item	Location (Pl. No.)	Capacity (100% Full) (m <sup>3</sup> )	Weight (80% Full) (t)	LCG (m)	TCG (m)	YCG (m)	FSM (t/m <sup>3</sup> )
L.O. OVERBOARD TANK	39-44	33.008	32.038	36.148	-4.603	5.744	25.421
BLEED SEP. OIL TANK	29-39	29.465	29.465	30.179	-0.000	1.899	12.442
BLEED TANK	17-25	70.178	70.178	17.968	0.000	1.762	120.191
G.W./S.W. HOLDING TANK	39-49	49.037	49.037	40.960	-5.377	1.443	64.445
S.W. T. (U)	128-127	128.627	128.627	128.627	0.000	0.000	98.319
Total		303.294	303.294	23.373	-0.045	3.180	205.736

ARGYRO	290000 DWT CRUDE OIL TANKER
CAPACITY PLAN	
SCALE: 1/400	DESIGNER: IORDANIS ALEXIOU
nm18048	
School of Naval Architecture and Marine Engineering NTUA	