

APPENDIX A

- I. Model Components***
- II. Calibration of Artificial Plastic Hinges***

I. Model Components

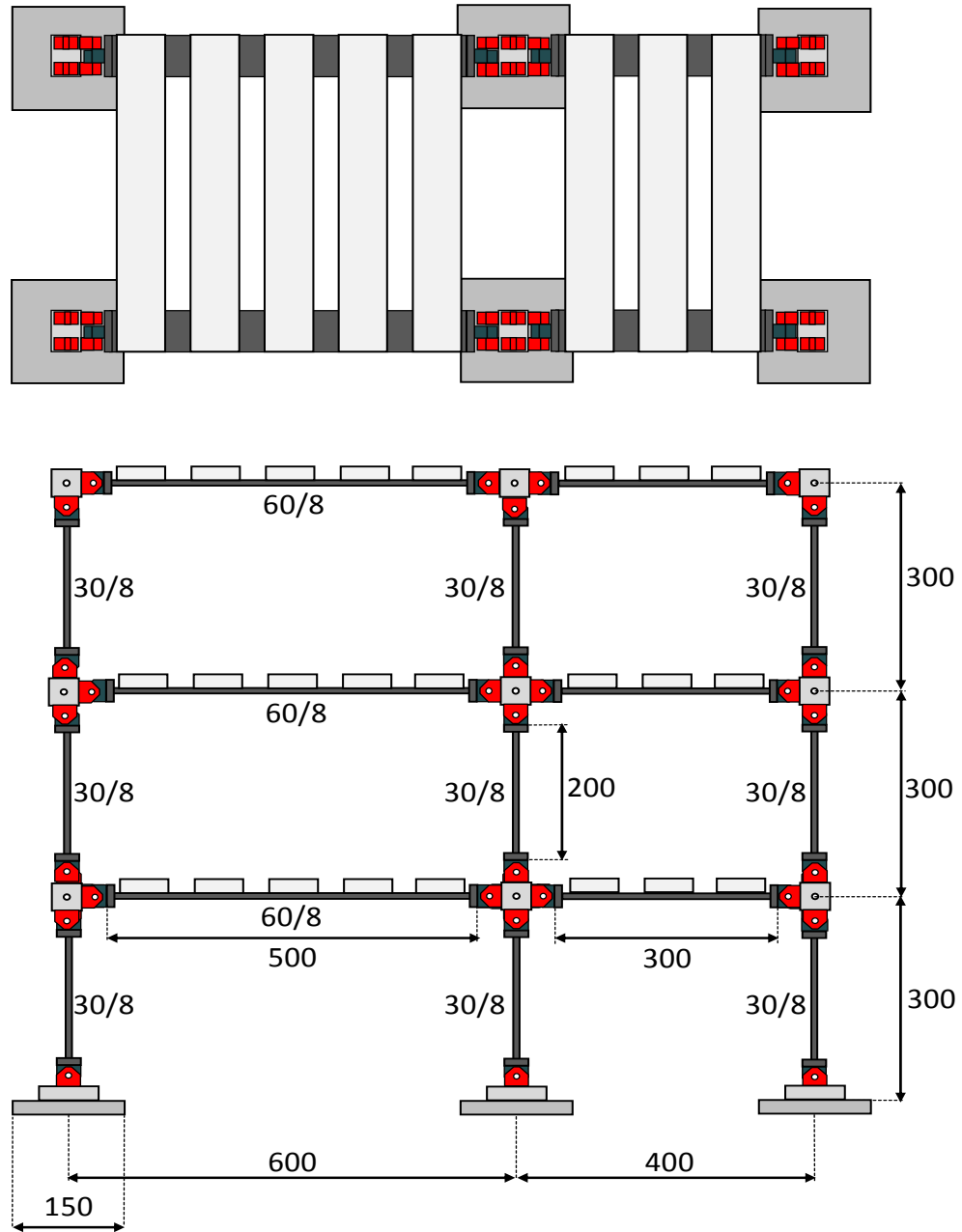


Figure A1. Technical drawing of original model building.

18 x

200/30/8

aluminum

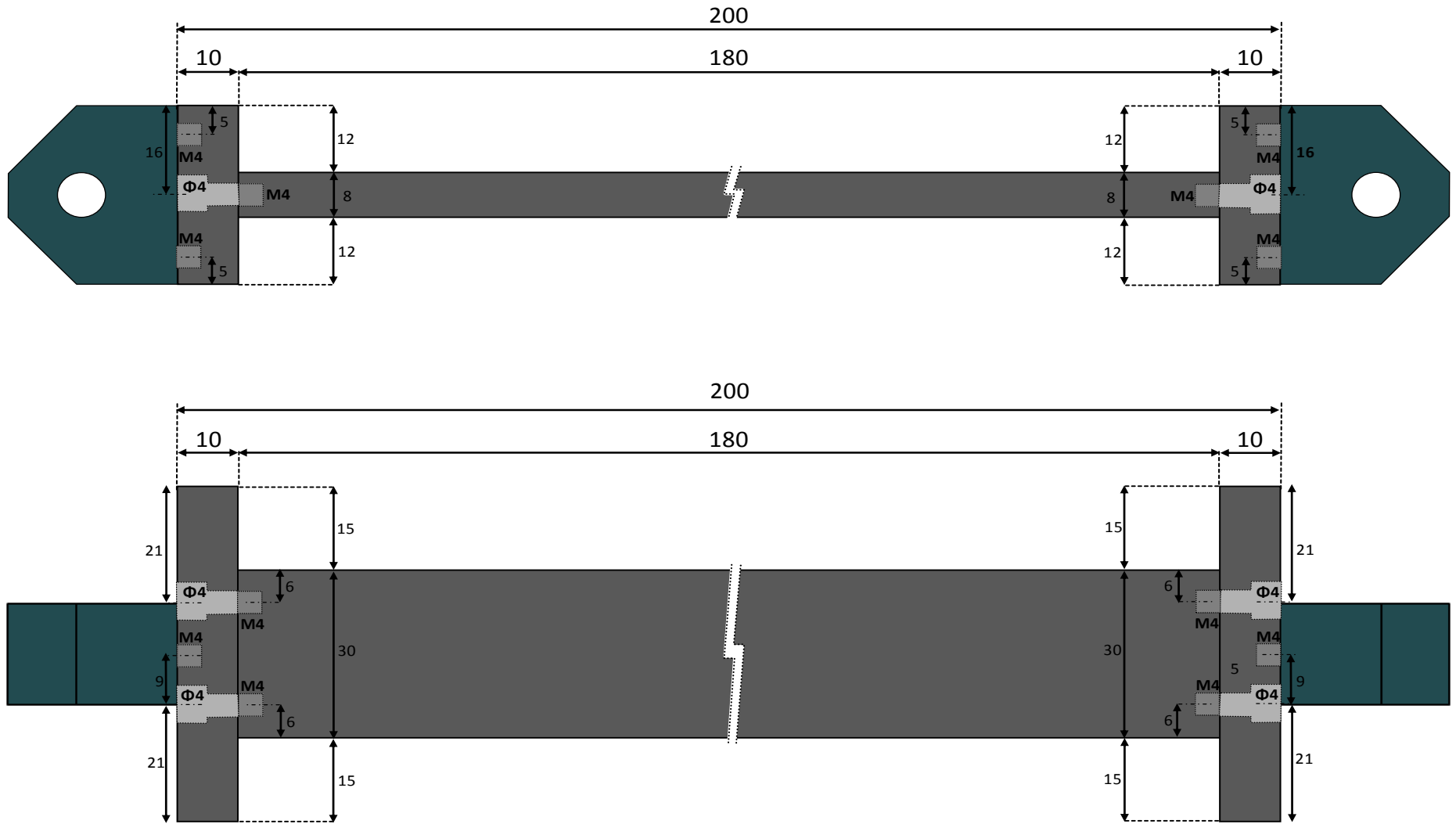


Figure A2. Technical drawing of model columns.

6 x

300/60/8

aluminum

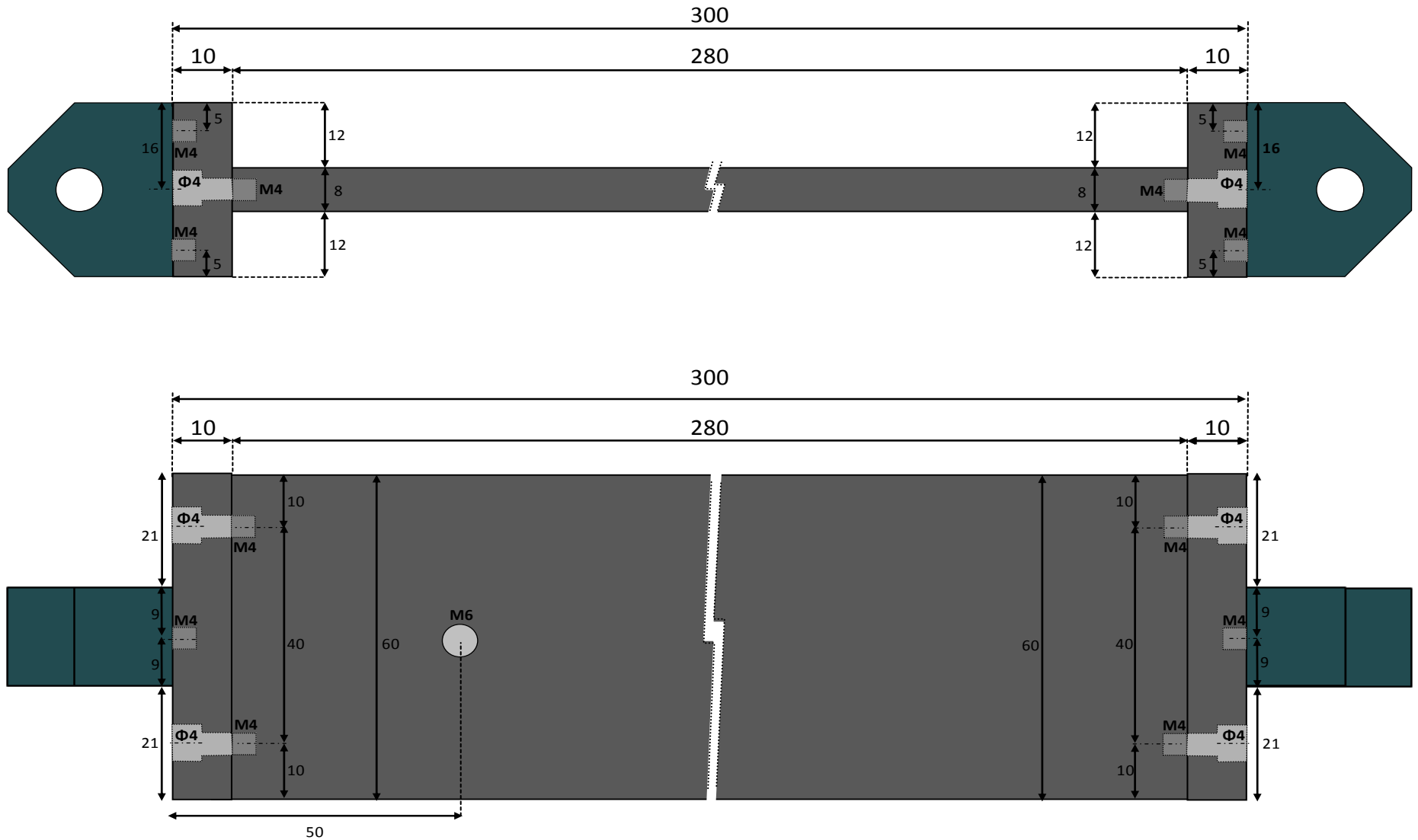


Figure A3. Technical drawing of model beams.

6 x

500/60/8

aluminum

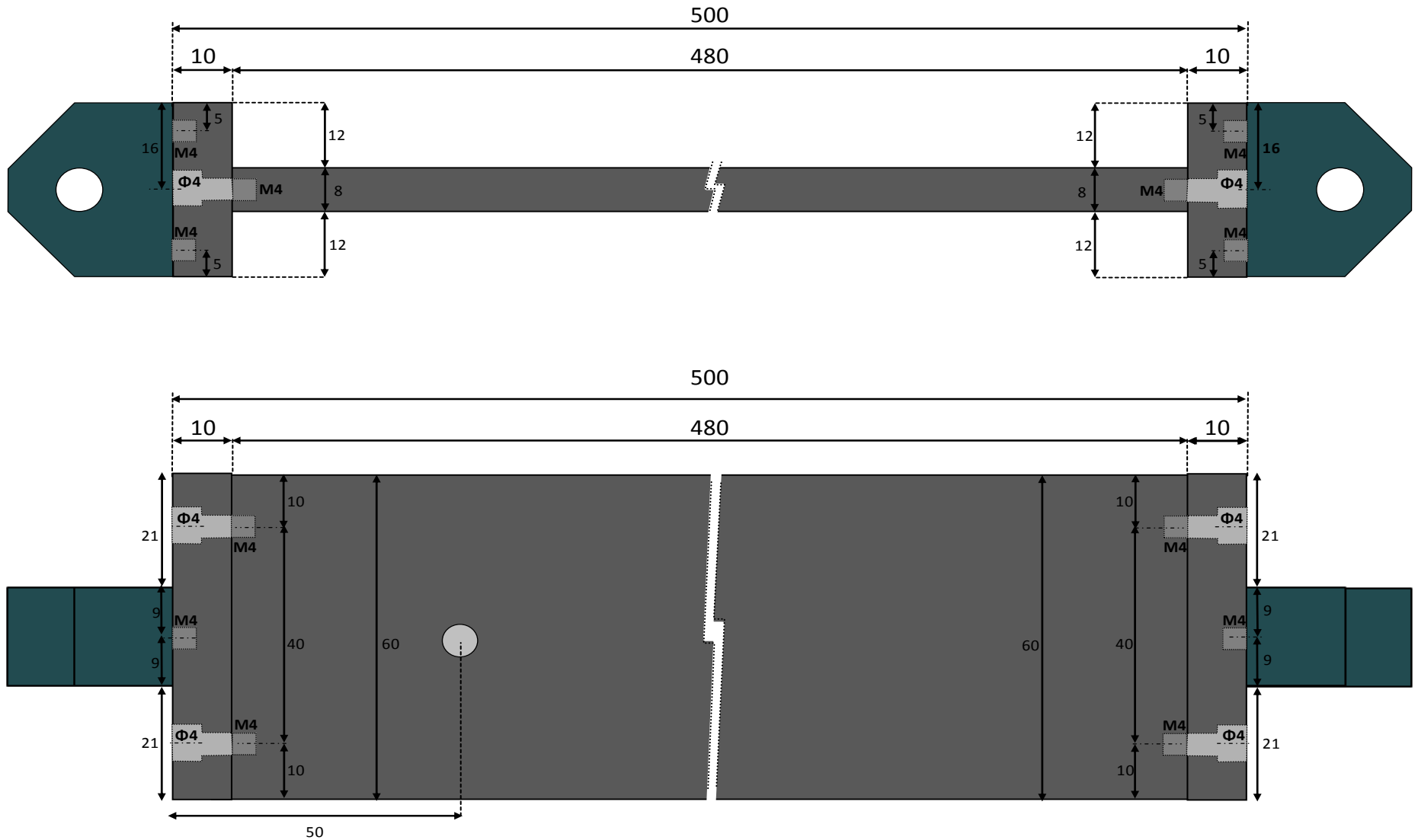


Figure A4. Technical drawing of model beams.

4 x

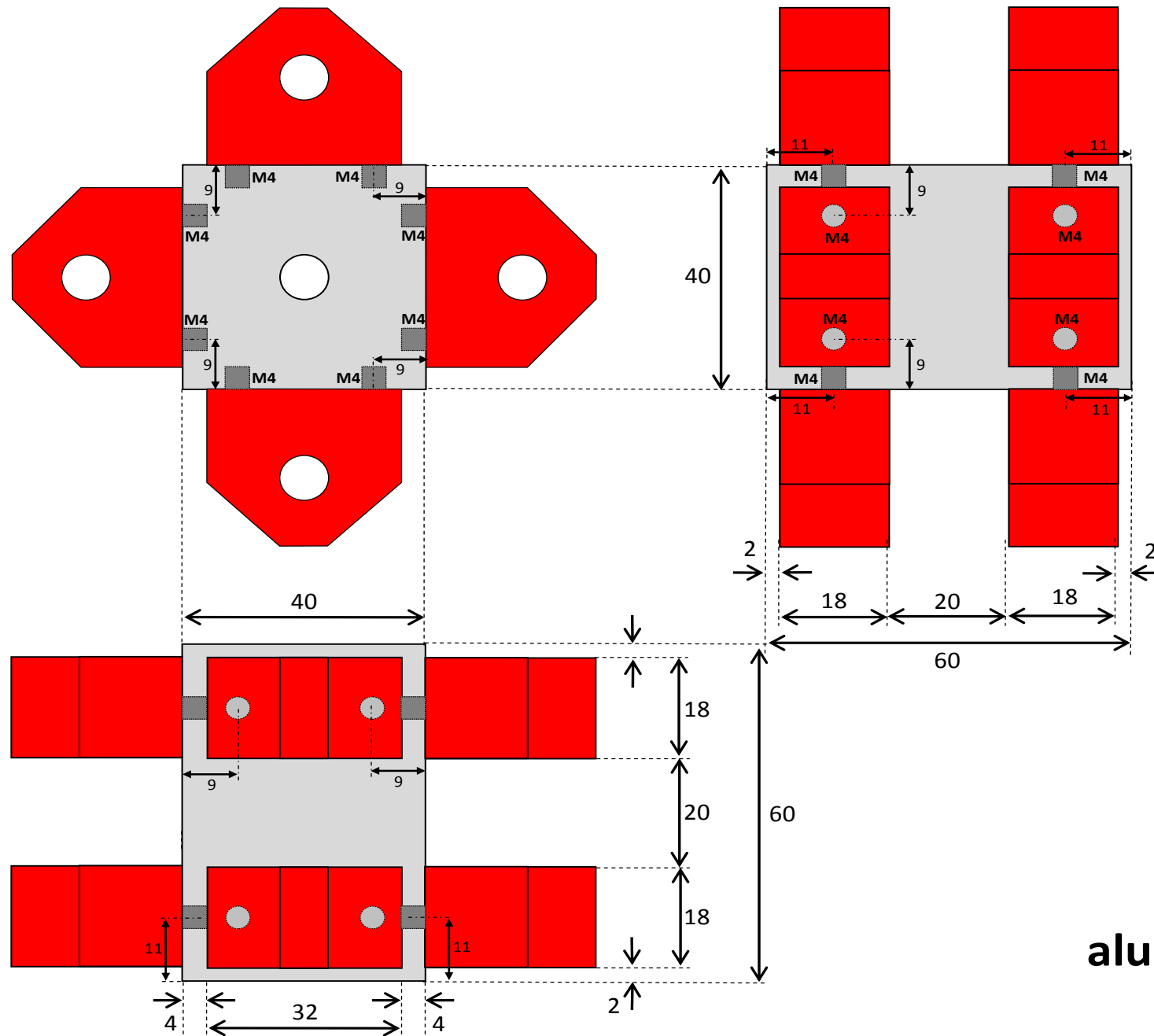


Figure A5. Technical drawing of beam – column connection.

10 x

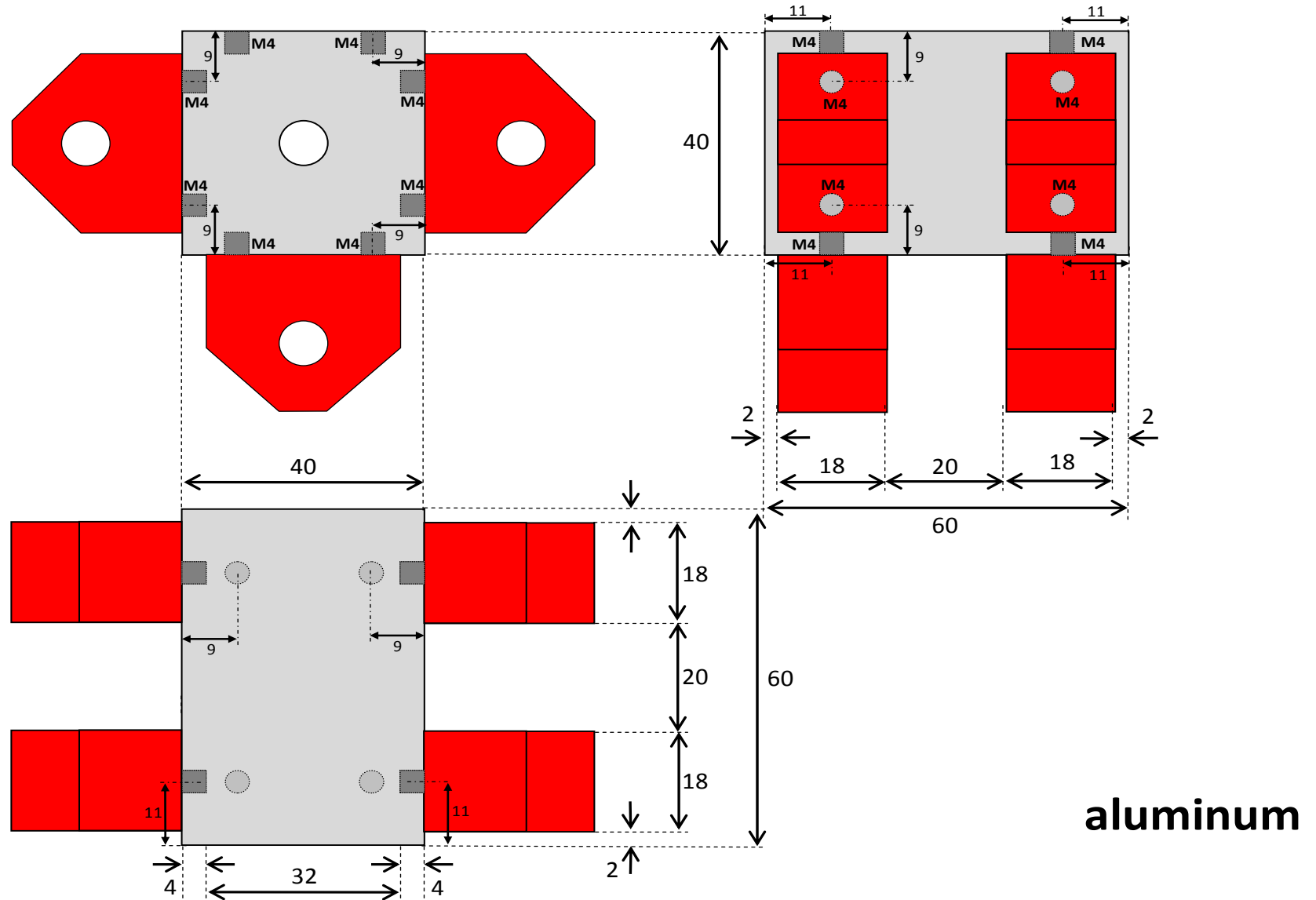


Figure A6. Technical drawing of beam – column connection.

4 x

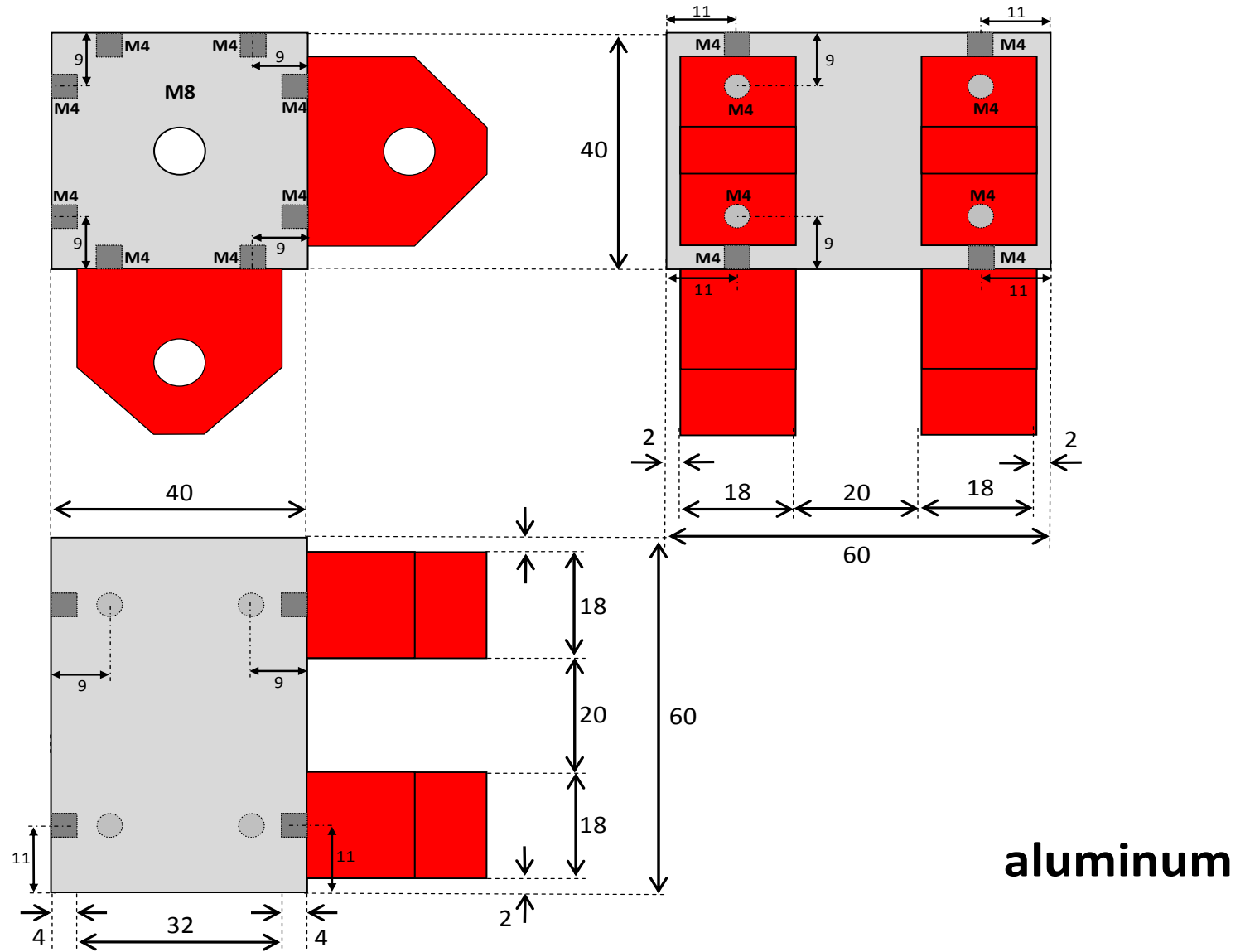
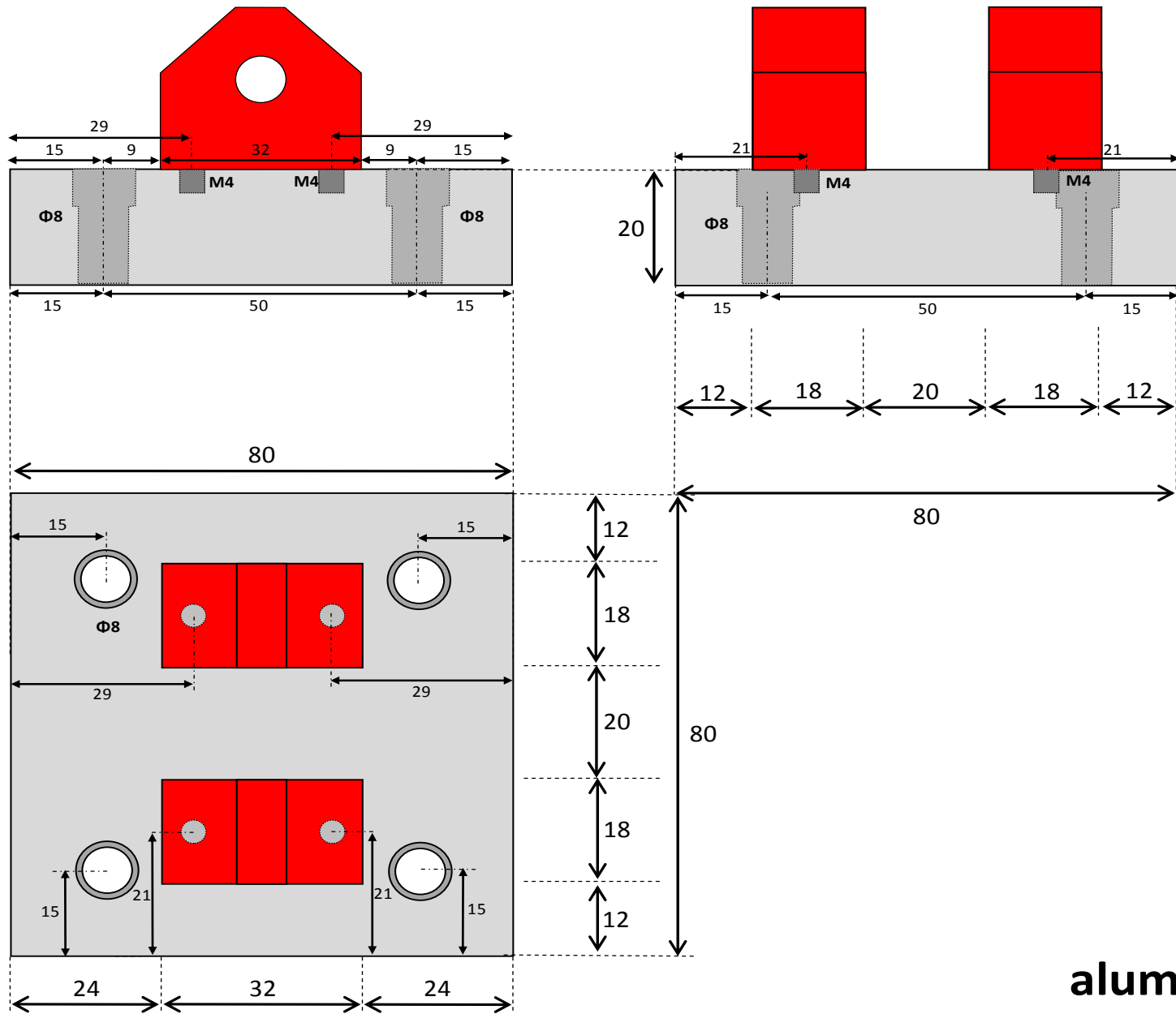


Figure A7. Technical drawing of beam – column connection.

6 x



aluminum

Figure A8. Technical drawing of column - footing connection.

6 x

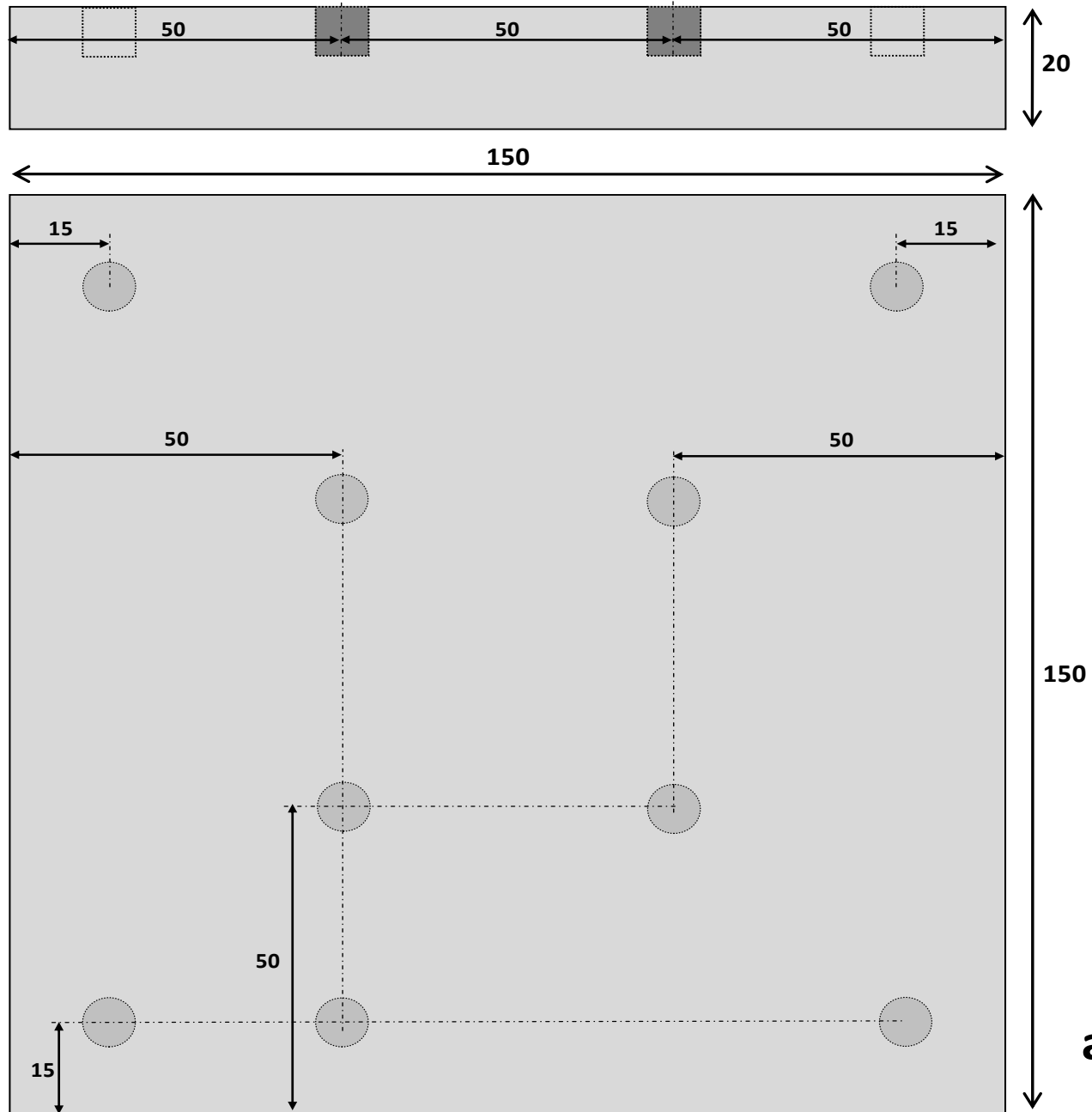


Figure A9. Technical drawing of column footing.

24 x

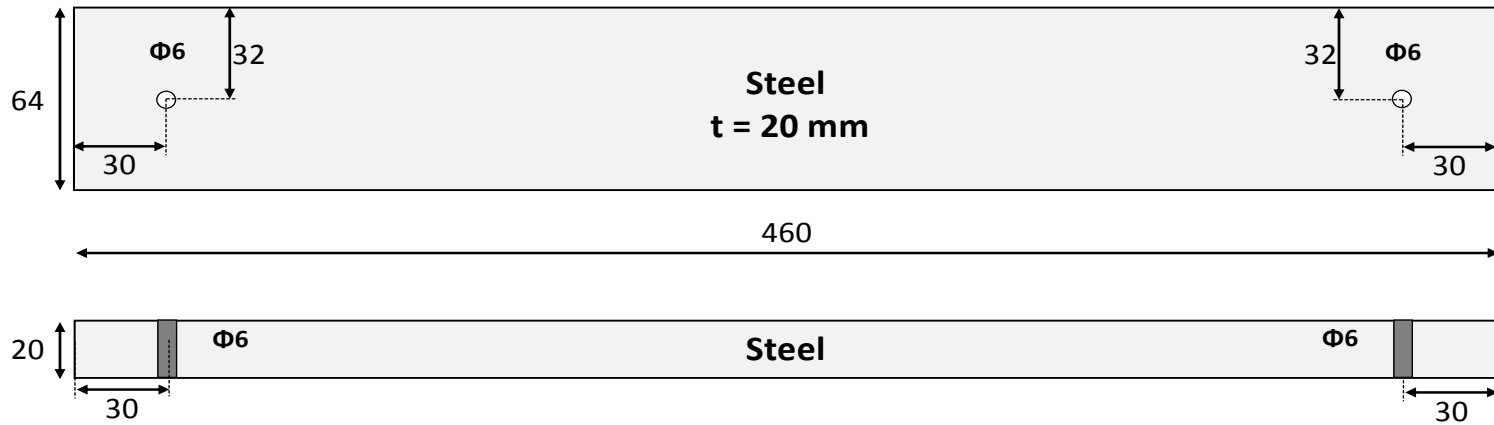


Figure A10. Technical drawing of mass - inducing steel plates.

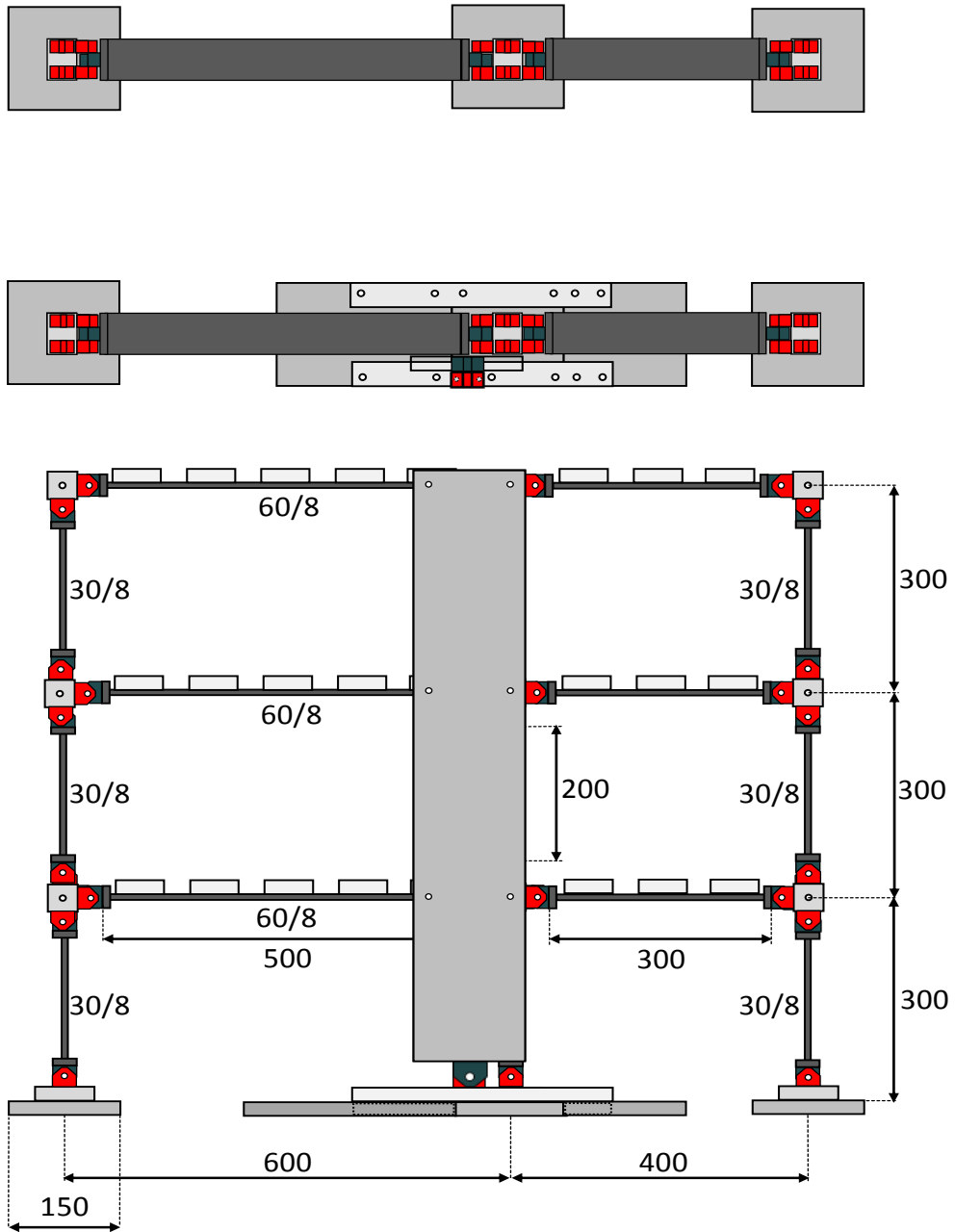
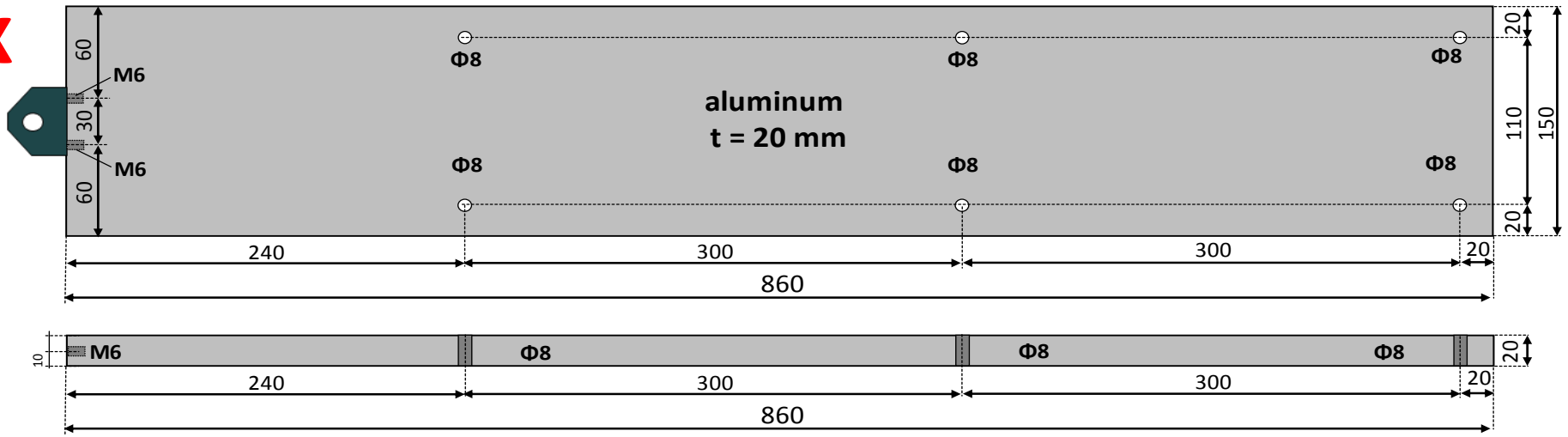


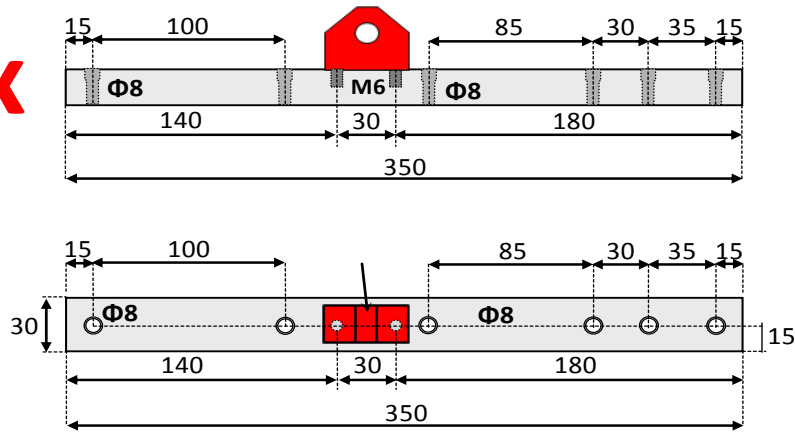
Figure A11. Technical drawing of reinforced model building.

2 x
(T)



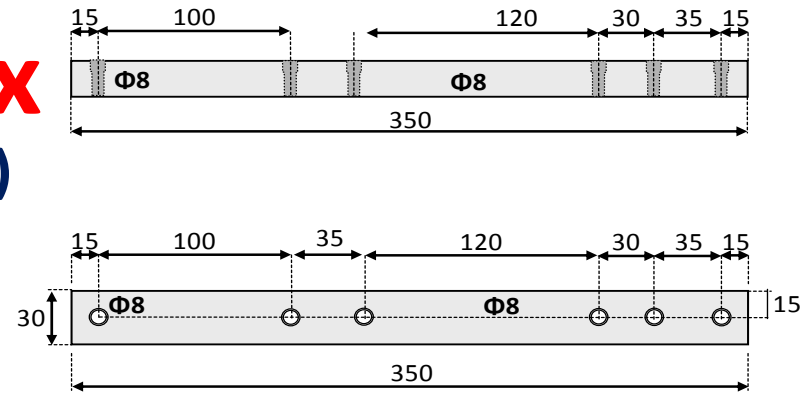
aluminum

2 x
(C)



steel

2 x
(D)

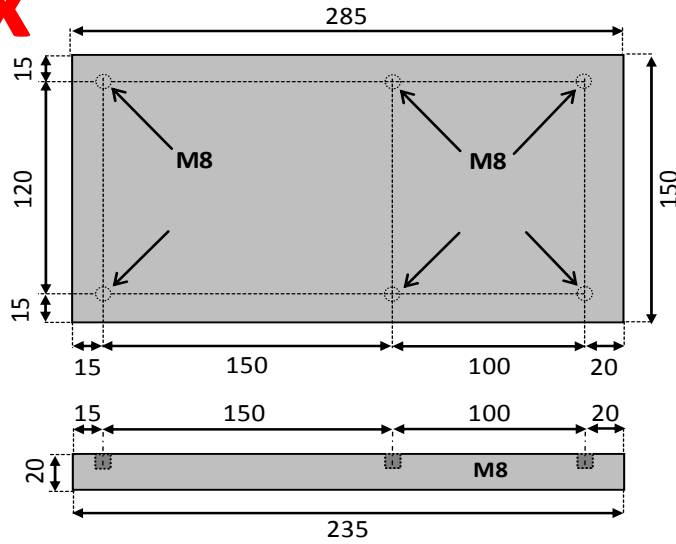


steel

Figure A12. Technical drawing of reinforcing shear wall.

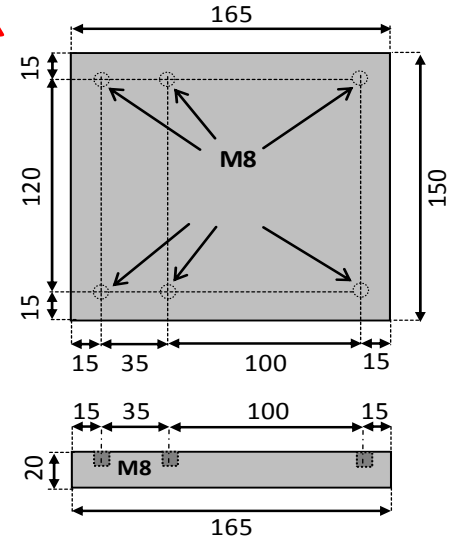
2 x

(A')



2 x

(B')



aluminum

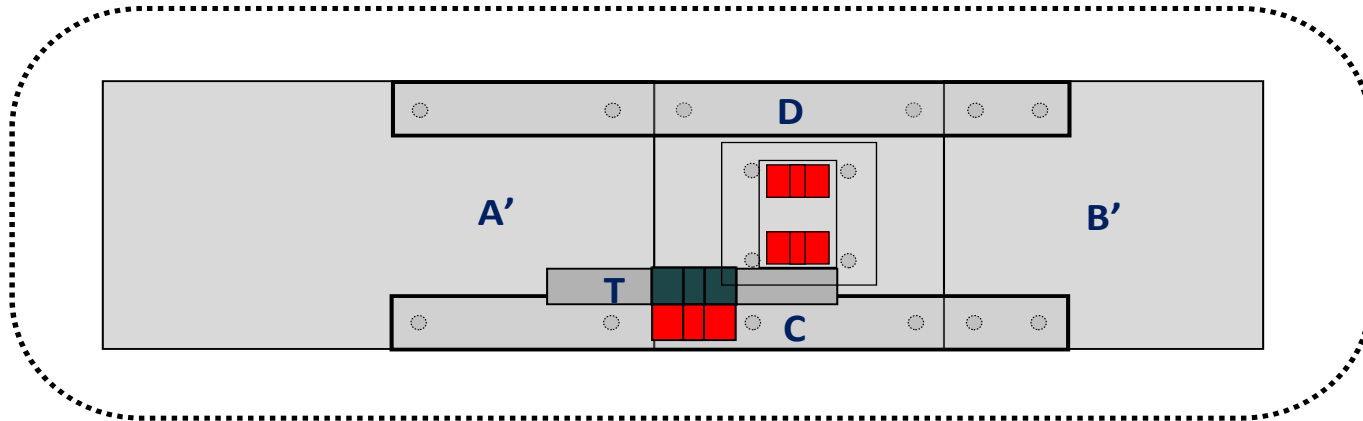
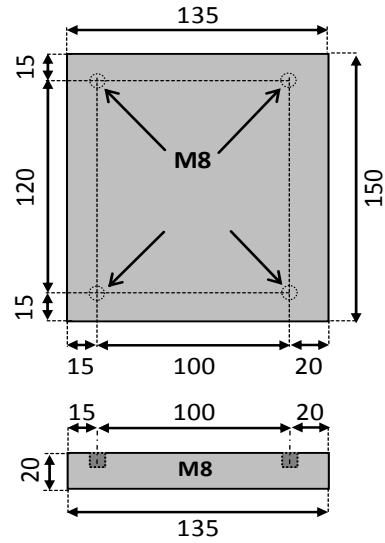


Figure A13. Technical drawing of conventional shear wall footing.

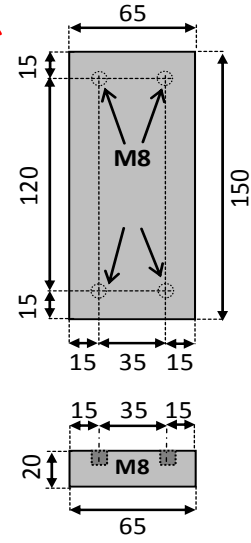
2 x

(A)



2 x

(B)



aluminum

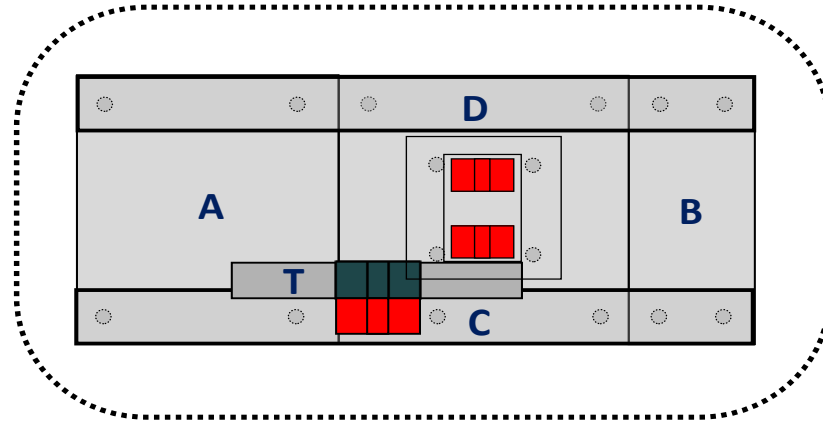


Figure A14. Technical drawing of rocking shear wall footing.